

Transportation Attachment VII

**Traffic Management Practices
Homestead-Miami Speedway**

Traffic Management Practices for Major Events at Homestead-Miami Speedway

To accommodate traffic demand for major events, the Speedway manages event operations and event traffic through a series of highly coordinated traffic management practices which include extensive agency coordination and a multi-level event planning process leading up to and during the NASCAR event. This results in a well coordinated and well managed program which includes the dispersal of information to spectators, the installation of directional signage, the deployment of over 150 off duty police officers to manage traffic arriving or departing the City of Homestead, coordination with Miami-Dade County to override control of key signalized intersections, and coordination with Florida's Turnpike to prepay tolls, monitor traffic conditions, lift inbound and outbound tolls and implement a third northbound lane on the turnpike for departing spectators. These traffic management practices are utilized for major events (over 28,000 spectators) and are implemented each year for the NASCAR championship racing series and the Indy Racing League. The Speedway spends approximately \$340,000 each year to implement this Traffic Management Program for major events.

Sample material used by the Speedway to implement their Traffic Management Program is provided in **Transportation Attachment VII**. The traffic management practices include the following:

- **Traffic Informational Brochures** are provided to all Ticket Holders to address Inbound and Outbound travel routes to General "Free" Parking and to Reserved Parking based upon the spectator's direction of arrival to the Speedway.
- **Directional Signage** for the NASCAR Championship Weekend is installed along the Inbound and Outbound travel routes to General "Free" Parking and Reserved Parking based upon the spectator's direction of arrival and departure to and from the Speedway.
- **Variable Message Signs** for the NASCAR Championship Weekend are installed along the Outbound travel routes from Reserved Parking to add lighted directional information for departing spectators.
- **Traffic Control Officers** – The Speedway coordinates the assemblage, scheduling and deployment of approximately 150 off-duty Florida Highway Patrol and Municipal Police Officers to work the "Traffic Detail" during the Friday, Saturday and Sunday NASCAR Events. These off-duty Florida Highway Patrol and Municipal Police Officers provide directional traffic assistance at approximately 50 intersections to manage the inbound and outbound traffic for spectator arrival and departure during the Friday, Saturday and Sunday NASCAR Events. Each officer at each intersection is given specific instructions on where to direct inbound and outbound motorists.
- **Traffic Signal Operation and Signal Overrides** – The Speedway coordinates with the Miami-Dade County Public Works Department to transfer control of the traffic signal operations to Florida Highway Patrol and Off-Duty Police Officers to manage the inbound and outbound traffic during spectator arrival and departure for the Friday, Saturday and Sunday NASCAR Events. Florida Highway Patrol, City of Homestead and numerous other municipal police officers control the traffic signals leading into and out of the study area during NASCAR Weekend. Signal overrides occur at the following locations:

- SW 137 Ave at the exit to the HEFT
- SW 137 Avenue at SW 288 Street
- SW 312 Street at SW 152 Avenue
- SW 312 Street at SW 157 Avenue
- SW 137 Avenue at SW 296 Street
- SW 137 Avenue at SW 312 Street
- SW 344 Street at SW 167 Avenue
- SW 344 Street at US-1

- **Coordination with Florida’s Turnpike** – The Speedway works in coordination with Florida’s Turnpike to lift tolls (either inbound or outbound) at the Homestead Toll Plaza during NASCAR Weekend to improve travel time into and out of the event. Toll are prepaid by the Speedway to Florida’s Turnpike before the NASCAR Weekend. Toll are typically lifted for the following timeframes:

- Outbound Toll are lifted for the Saturday NASCAR Race
- Inbound and Outbound Toll are lifted for the Sunday NASCAR Race
- The Speedway coordinates with Florida’s Turnpike to lift the inbound toll on Sunday before the queues begin to form at the Homestead Toll Plaza.
- The Florida Highway Patrol Commander for Florida’s Turnpike is stationed on-site at the Speedway to monitor traffic conditions and coordinate with his traffic detail to improve travel conditions for both inbound and outbound motorists.
- The Speedway coordinates with Florida’s Turnpike to fully staff specialized turnpike services personnel including toll booth operators and Road Ranger drivers patrolling the turnpike system.
- The Speedway permits each year a **Maintenance of Traffic (MOT) Plan** for the use of the NB shoulder on the HEFT for outbound traffic leaving the Speedway after the Sunday Cup Series. Outbound race traffic on Sunday is directed to the HEFT via SW 137 Avenue.
- Traffic entering the HEFT and traveling northbound uses the shoulder to create a third NB lane from SW 137 Avenue to SW 216 Avenue where the HEFT transitions from a 4 lane divided freeway to a 6 lane divided freeway with 3 lanes northbound.
- The MOT Plan accommodates the northbound traffic that enters the HEFT at US-1 and at SW 312 Street, and uses bollards at SW 137 Avenue to ensure that northbound traffic entering the HEFT at SW 137 Avenue will not interfere with the northbound traffic already traveling on the HEFT.
- The Speedway closely coordinates the operation of this MOT plan with Florida’s Turnpike.
- This MOT plan (which provides controls at turnpike entrances and exits in order to use the shoulder for NB travel) is considered by Florida’s Turnpike to be a model for the evacuation of the Keys.

- **Operation of On-Site Shuttles** – The Speedway operates On-Site shuttles to transport spectators to and from ADA Parking and outlying parking areas.

- **Management of Existing Travel Lanes** – The Speedway manages their existing roadway infrastructure to fully accommodate the traffic demand for inbound or outbound traffic. Based upon the arrival and departure locations, inbound and outbound event traffic follows specified travel routes to enter and depart the parking areas to efficiently move traffic back to the regional roadways.

TRAFFIC PLAN

NOV 20-22, 2009

On the road to "THE Championship Track"





2009

**Ford Championship Weekend
Tentative Schedule Subject to Change**



Friday, November 20

10:00 AM GATES OPEN
11:30 AM – 1:00 PM NASCAR Sprint Cup Series Ford 400 PRACTICE
1:10 PM – 3:00 PM NASCAR Nationwide Series Ford 300 PRACTICE
3:10 PM NASCAR Sprint Cup Series Ford 400 QUALIFYING
5:00 PM NASCAR Camping World Truck Series Ford 200 QUALIFYING
6:40 PM – 7:20 PM NASCAR Nationwide Series Ford 300 Final PRACTICE
7:30 PM NASCAR Camping World Truck Series Ford 200 DRIVER INTROS
8:00 PM NASCAR Camping World Truck Series Ford 200 Race
(134 laps, 201 miles)

Saturday, November 21

11:00 AM GATES OPEN
11:35 AM NASCAR Nationwide Series Ford 300 QUALIFYING
1:30 PM – 2:15 PM NASCAR Sprint Cup Series Ford 400 PRACTICE
2:50 PM – 3:50 PM NASCAR Sprint Cup Series Ford 400 Final PRACTICE
4:00 PM NASCAR Nationwide Series Ford 300 DRIVER INTROS
4:30 PM NASCAR Nationwide Series Ford 300 Race
(200 laps, 300 miles)

Sunday, November 22

10:00 AM GATES OPEN
2:45 PM NASCAR Sprint Cup Series Ford 400 DRIVER INTROS
3:00 PM NASCAR Sprint Cup Series Ford 400 Race
(267 laps, 400.5 miles)



TRAFFIC LIGHTS

NASCAR Ford Championship Weekend

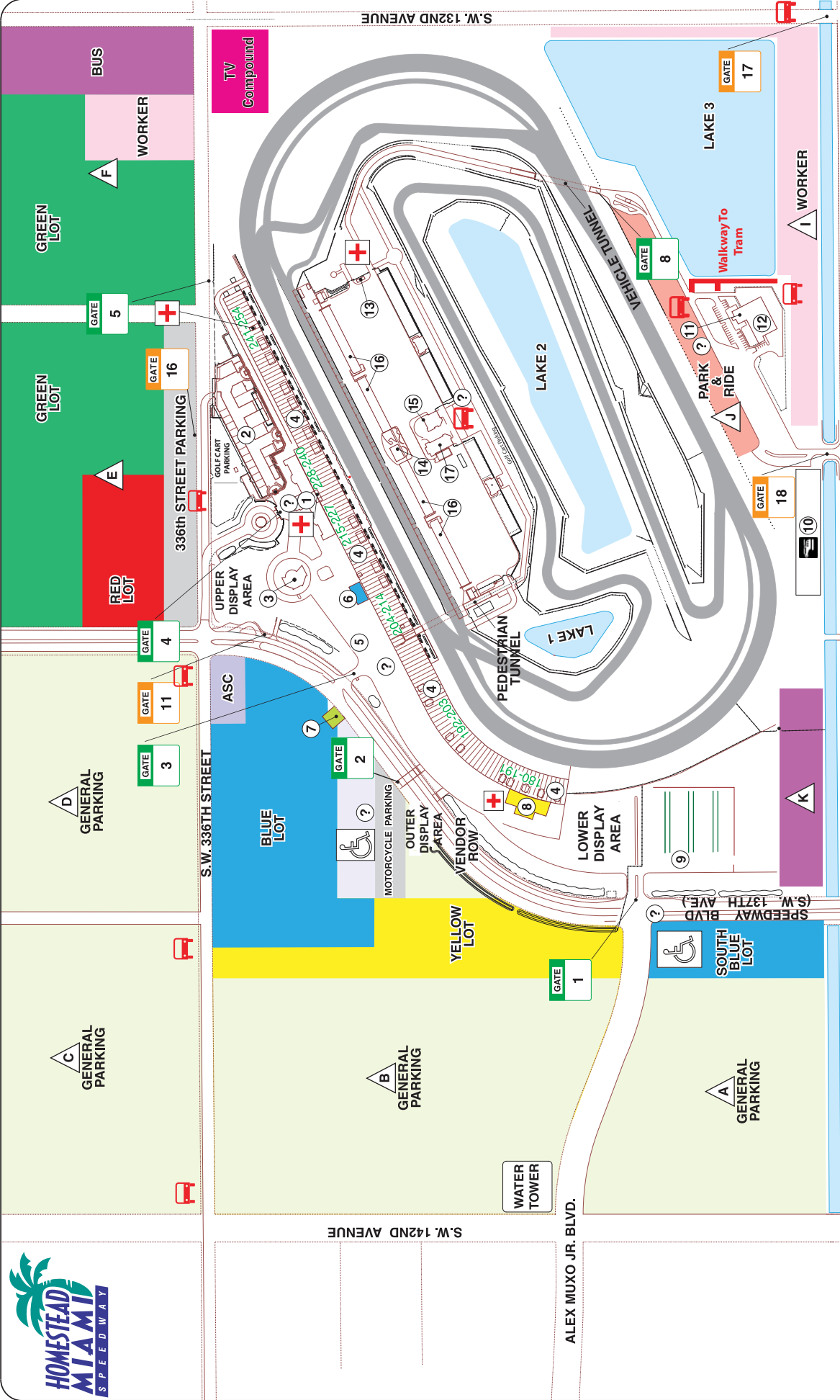
Traffic Lights Under Control of HMS/HPD

On 137 th Avenue	@	Turnpike Exit
	@	288 th Street
	@	Waterstone
	@	312 th Street
On 312 th Street	@	152 nd Avenue
	@	Entrance to Turnpike
On 344 th Street	@	High School
	@	US-1





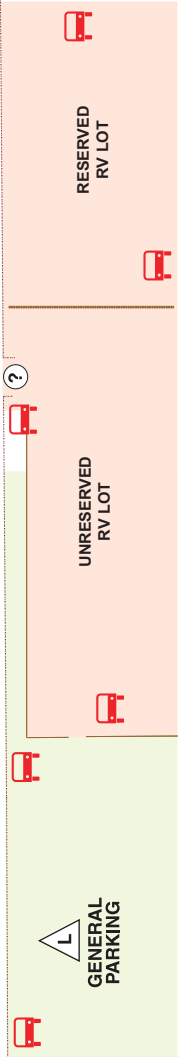
PALM DRIVE (S.W. 344TH STREET)



LEGEND

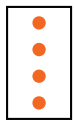
	RESTROOMS
	FIRST AID
	BUILDINGS
	INFORMATION
	TICKET GATES
	SERVICE GATES
	TRAM STOPS
	PARKING LOTS

- ① ADMINISTRATIVE BUILDING
- 1. ADMINSTRATIVE OFFICE
- 2. SKYBOX
- 3. RACE CONTROL
- 4. PRESS VIEWING
- ② CHALET VILLAGE
- ③ RACE VILLAGE PAVILION
- ④ GRANDSTANDS
- ⑤ POLICE/LOST AND FOUND
- ⑥ SPEEDWAY CLUB ELEVATORS
- ⑦ TICKET OFFICE/WILL CALL
- ⑧ TURN-1 SUITES/CHAMPIONS CLUB
- ⑨ TURN-2 VILLAGE (CHAMPIONSHIP TAILGATE)
- ⑩ HELIPORT
- ⑪ CREDENTIAL/REGISTRATION BUILDING
- ⑫ SHIPPING & RECEIVING/MAINTENANCE
- ⑬ INFIELD CARE CENTER
- ⑭ PHOTO CENTER / TIMING & SCORING
- ⑮ INFIELD MEDIA CENTER
- ⑯ GARAGE SUITES / PIT ROAD BOX SEATS
- ⑰ TEAM PR CENTER/PADDOCK CAFE





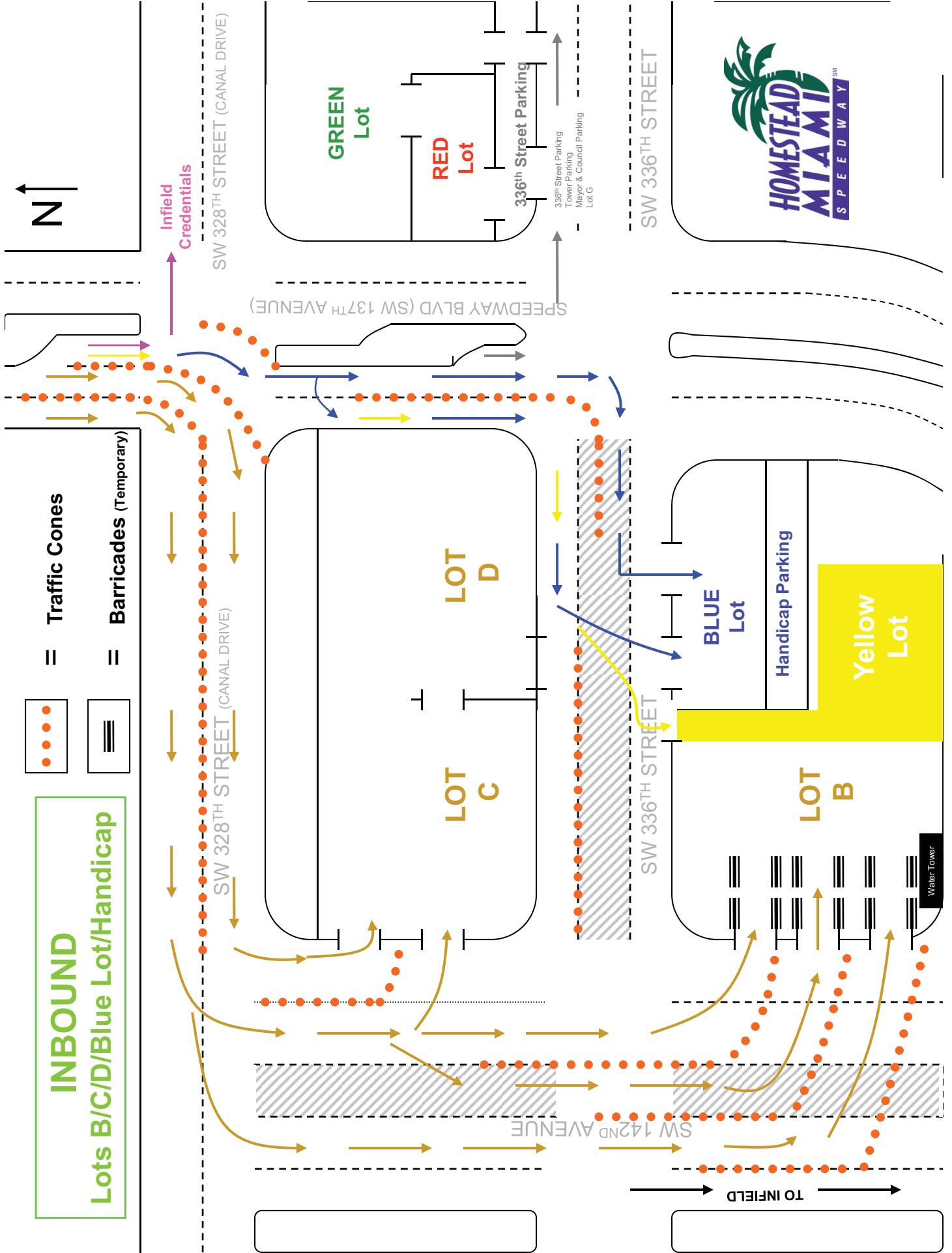
INBOUND
Lots B/C/D/Blue Lot/Handicap



Traffic Cones



Barricades (Temporary)



INBOUND

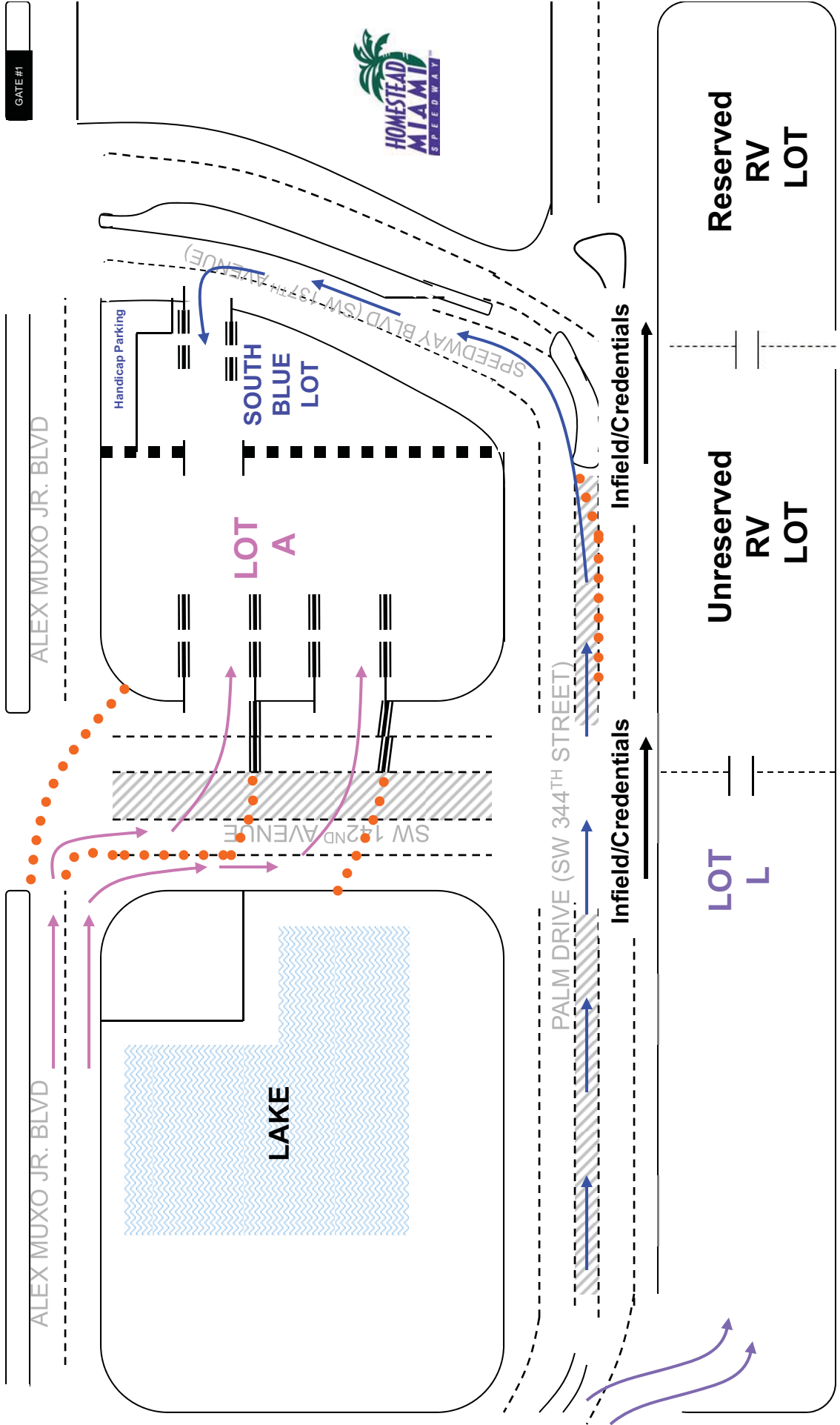
Lots A/Lot L/South Blue Lot-Handicap

- = Traffic Cones
- = Barricades (Temporary)

Water Tower

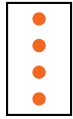


LOT B



OUTBOUND

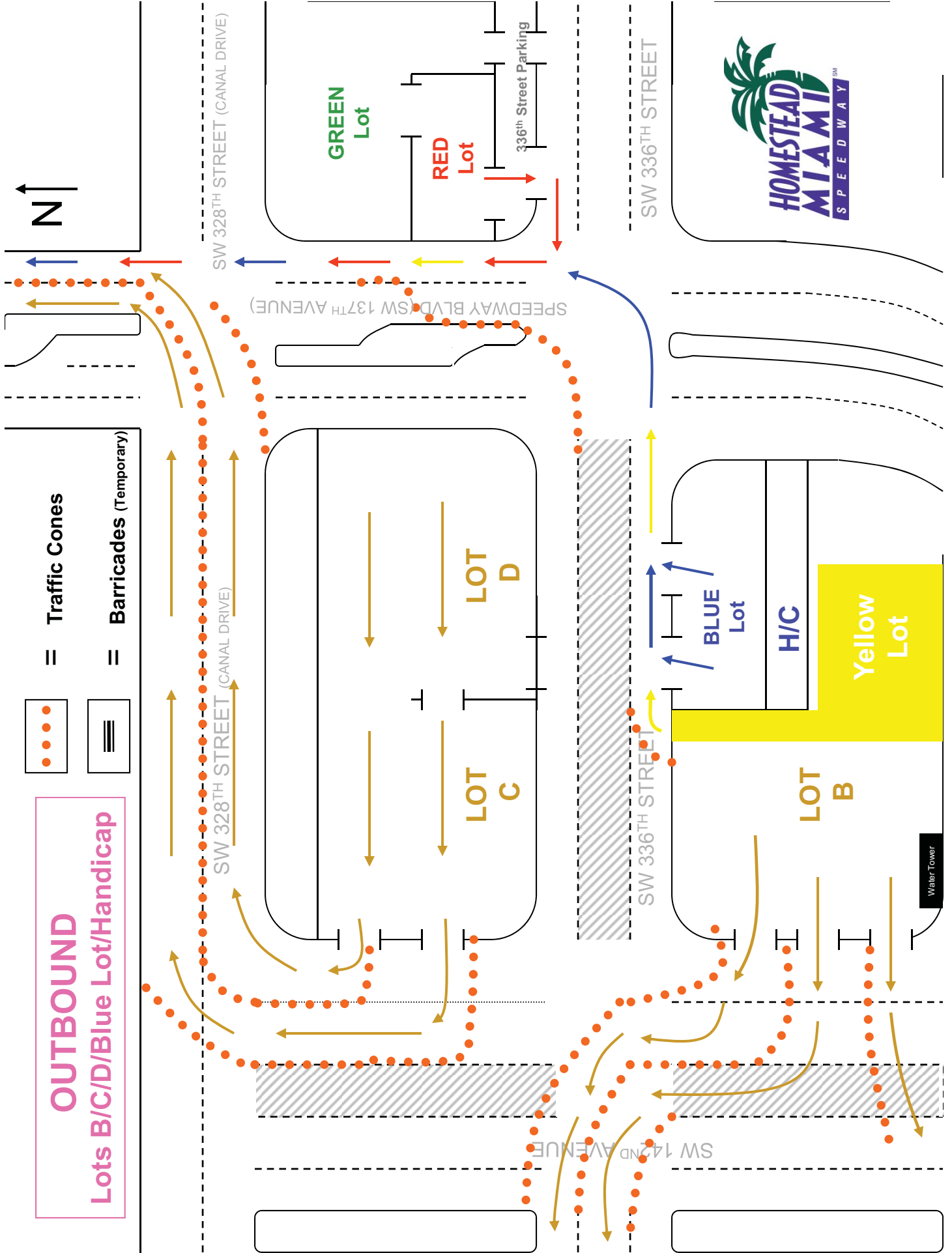
Lots B/C/D/Blue Lot/Handicap



= Traffic Cones



= Barricades (Temporary)



Water Tower



SW 328TH STREET (CANAL DRIVE)

SW 336TH STREET

SPEEDWAY BLVD (SW 137TH AVENUE)

SW 142ND AVENUE

GREEN Lot

RED Lot

336th Street Parking

LOT D

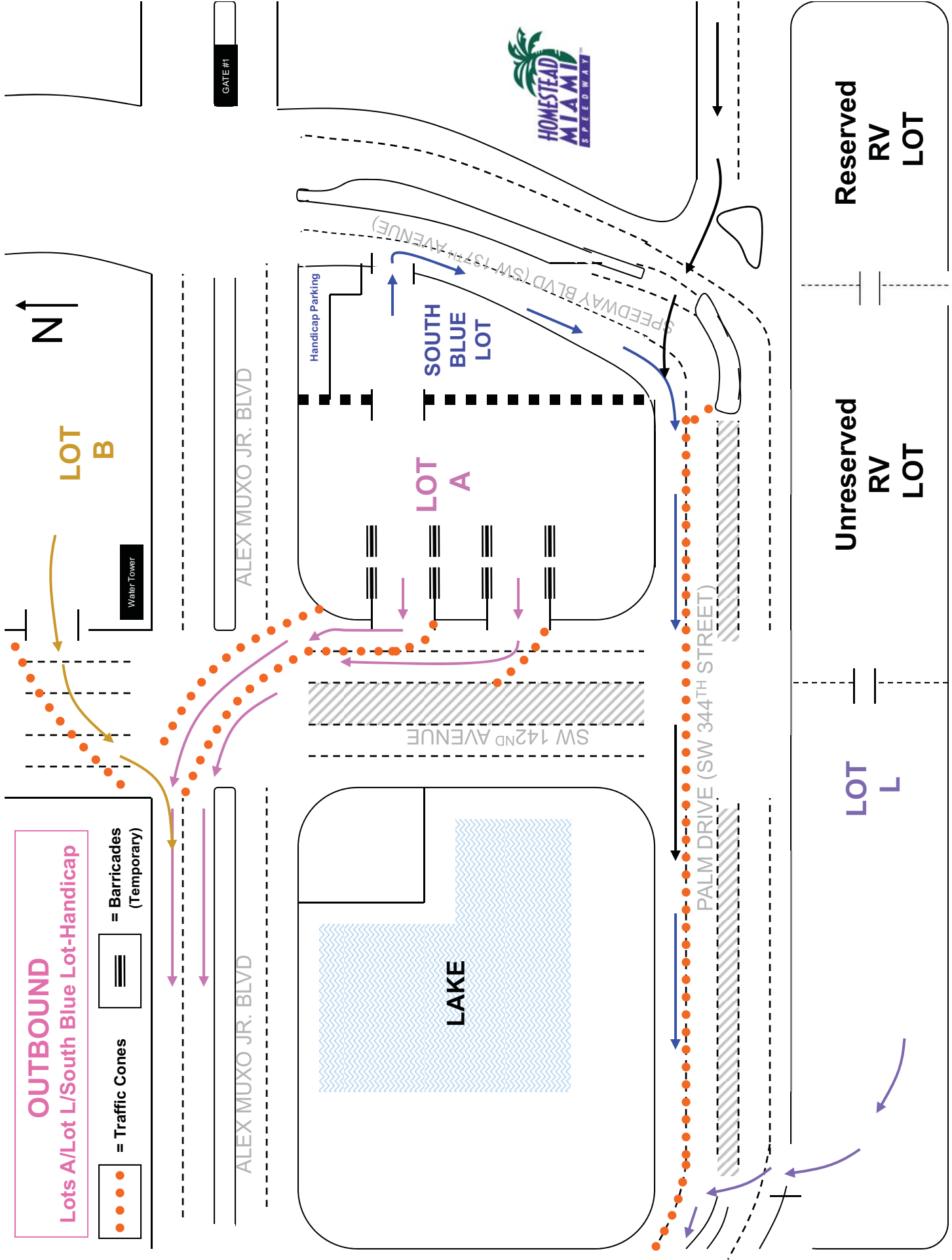
LOT C

BLUE Lot

H/C

Yellow Lot

LOT B





CONTINGENCY PARKING PLANS

NASCAR Ford Championship Weekend

If Lots A & L Full

- Route ALL Traffic Arriving Eastbound SW 328th Street or Southbound on SW 152nd Avenue EAST on SW 328th Street to SW 142nd Avenue
- SW 142nd Avenue South into Lots B, C, or D

If Lot L Full

- Route ALL Traffic Arriving Eastbound on SW 344th Street (Palm Drive) to SW 142nd Avenue
- SW 142nd Avenue North to Lots A, B, or C



Traffic Informational Brochure



TRAFFIC INFORMATION

THE Championship Track

Welcome to Homestead-Miami Speedway!

Homestead-Miami Speedway is continually working with law enforcement officials to facilitate traffic flow. Please familiarize yourself with the traffic maps, which color code the major roads in and out of the Speedway. Please note that your exit plan will be determined by your parking location.

TO AVOID DELAYS:

- Allow extra time for entering and exiting the Speedway.
- Study the traffic plans, plan your route to the track.
- Please consider alternative routes (see inside maps for additional information).

Use all lanes of traffic available, please observe all directional signs.

If you have a parking pass, hang it from your mirror before you arrive at the track.

Handicap parking: Follow directions to Blue / Handicap Parking
 ✓ Disabled person must be in the vehicle on which the Parking Permit is displayed.

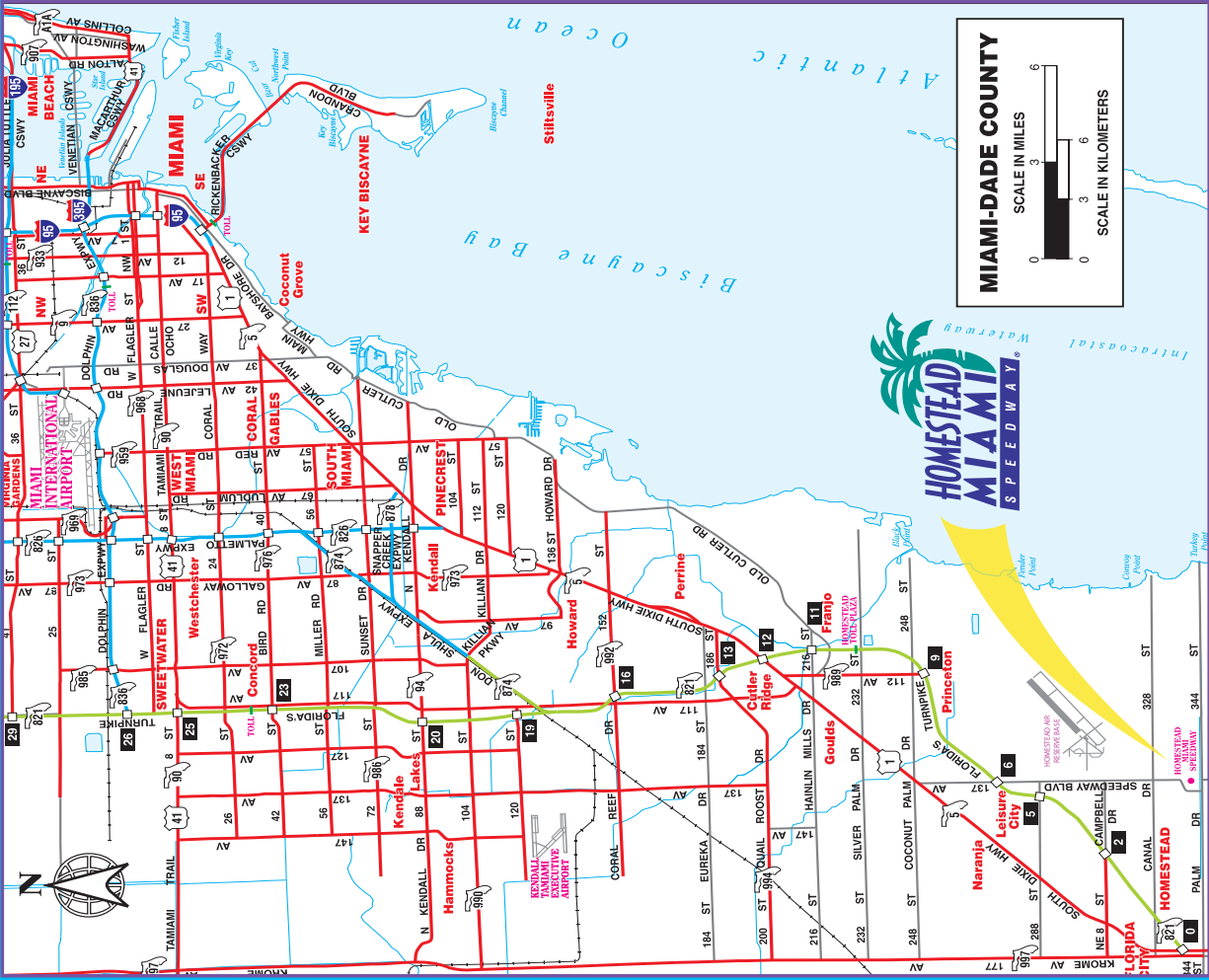
✓ Permit must be hung on the rear view mirror when parked in designated parking space.

✓ Both sides of the permit must have valid decals (Month/Year and DL#)

✓ Disabled Person license plates may be used in lieu of Parking Permit.



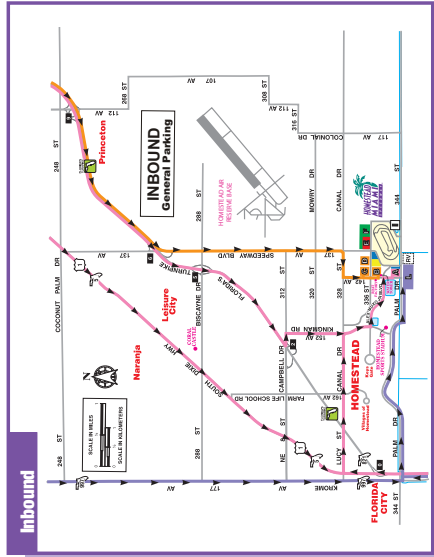
7:00 AM Parking Lots OPEN
 (Overnight parking is NOT permitted)



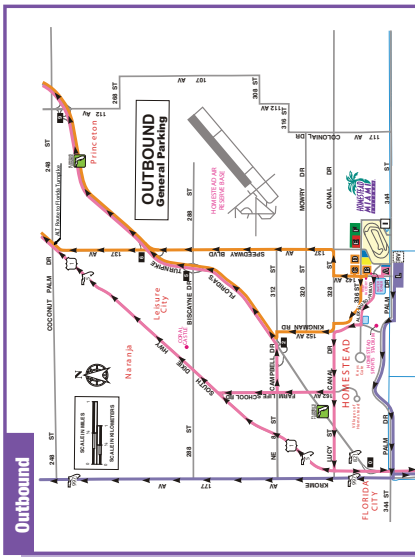
GENERAL "FREE" PARKING

ROUTES: Orange / Pink / Purple
Parking Pass NOT REQUIRED

- FROM THE NORTH**
Orange Route (Lots B, C*, D)
 Florida Turnpike South to Speedway Blvd
 Exit #6 (SW 137th Ave)
 South (Left) on Speedway Blvd
 Follow signs to General Parking
- Pink Route (Lot A)**
 Florida Turnpike South to Campbell Drive
 Exit #2 (SW 312th Street)
 East (Right) on Campbell Drive
 (SW 312th Street)
 Follow signs to General Parking
- OR
- US-1 South
 East (Left) on Lucy Street (SW 328th Street)
 Follow signs to General Parking
- Purple Route (Lot L*)**
 Krome Avenue South (SW 177th Ave)
 East (Left) on Palm Drive (SW 344th Street)
 Follow signs to General Parking
- FROM THE SOUTH**
Pink Route (Lot A)
 US-1 North
 East (Right) on Lucy Street (SW 328th Street)
 Follow signs to General Parking
- Purple Route (Lot L*)**
 US-1 North
 East (Right) on Palm Drive (SW 344th Street)
 Follow signs to General Parking



- TO THE NORTH OR SOUTH**
Pink Route (Lot A)
Orange Route (Lots B, C*, D)
 Exit Lots Carefully
 Follow LAW ENFORCEMENT directions
 All exit routes will lead to US-1
 and Florida Turnpike (North or South)
- Purple Route (Lot L*)**
 Exit Lots Carefully
 Follow LAW ENFORCEMENT directions
 All exit routes will lead to US-1 (North or South)
 and Krome Avenue North to I-75

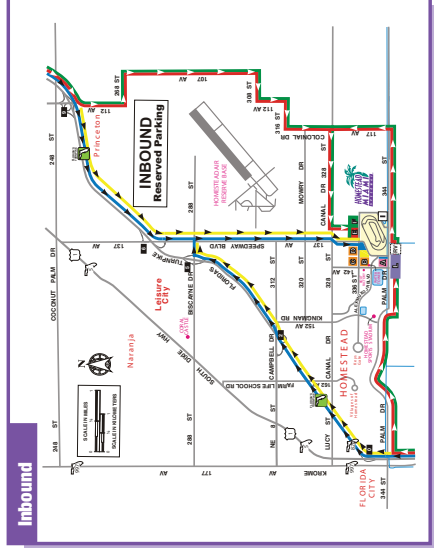


*FORD Championship Weekend ONLY

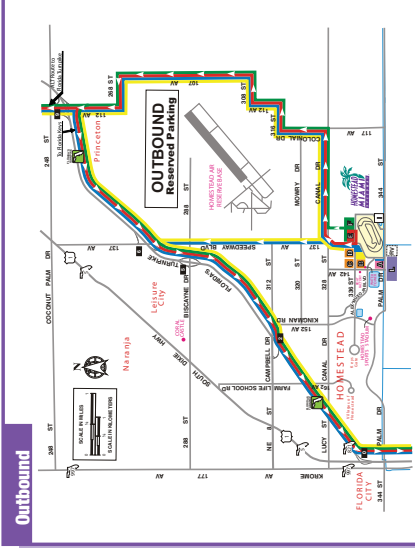
RESERVED PARKING

ROUTES: Yellow / Blue (Also Handicap Parking) / Red / Green
Parking Pass REQUIRED

- FROM THE NORTH**
Yellow Route
Blue Route (Also Handicap Parking)
 Florida Turnpike South to Speedway Blvd
 Exit #6 (SW 137th Ave)
 South (Left) on Speedway Blvd (SW 137th Ave)
 Follow signs to Blue/Handicap/Yellow Parking
- Red Route (Season Ticket Holder)**
Green Route (3-Day Package)
 Florida Turnpike South to SW 112th Ave Exit 9A
 South on SW 112th Avenue
 East (Left) on SW 268th Street
 Follow signs to Red/Green Parking
- FROM THE SOUTH**
Yellow Route
Blue Route (Also Handicap Parking)
 US-1 North
 Florida Turnpike North to Biscayne Drive Exit #5
 East (Right) on Biscayne Drive
 South (Right) on Speedway Blvd (SW 137th Ave)
 Follow signs to Blue/Handicap/Yellow Parking
- Red Route (Season Ticket Holder)**
Green Route (3-Day Package)
 US-1 North
 East (Right) on Palm Drive (SW 344th Street)
 North (Left) on 117th Avenue
 Follow signs to Red/Green Parking



- TO THE NORTH OR SOUTH**
Yellow Route
Blue Route (Also Handicap Parking)
 East (Right) on SW 336th Street
 North (Left) on Speedway Blvd (SW 137th Ave)
 East (Right) on Canal Drive (SW 328th Street)
 North (Left) on 117th Avenue/Colonial Drive
 Follow signs to US-1 North to
 Florida Turnpike North or US-1 South
- Red Route**
 West (Right) on SW 336th Street
 North (Right) on Speedway Blvd (SW 137th Ave)
 East (Right) on Canal Drive (SW 328th Street)
 North (Left) on 117th Avenue/Colonial Drive
 Follow signs to US-1 North to
 Florida Turnpike North or US-1 South
- Green Route**
 East (Right) on Canal Drive (SW 328th Street)
 North (Left) on 117th Avenue/Colonial Drive
 Follow signs to US-1 North to
 Florida Turnpike North or US-1 South



Exit Routes Subject to Change Due to Traffic Conditions



Traffic Detail Spreadsheet

NASCAR FCW 2009

Traffic Detail

Location	WEDNESDAY	THURSDAY	FRIDAY	SATURDAY	SUNDAY
Date	11/18/2009	11/19/2009	11/20/2009	11/21/2009	11/22/2009
Hours	0700-1900	0700-1900			
Supervisor			1400-2400	0900-2400	0600-2200
Palm Dr.& US1			1400-2400	0900-2400	0600-2200
Palm Dr.& US1				1100-2400	0800-2200
Palm Dr.& US1				1100-2400	0800-2200
Palm Dr.& US1				1100-2400	0800-2200
US 1 & Turnpike (Davis Pkwy)				1100-2400	0800-2200
Palm Dr.& 167 Ave			1400-2400	0900-2400	0600-2200
Palm Dr.& 167 Ave				1100-2400	0800-2200
Palm Dr.& 165 Ave			1400-2400	1100-2400	0800-2200
Palm Dr.& 162 Ave			1400-2400	1100-2400	0800-2200
Palm Dr.& 162 Ave				1100-2400	0800-2200
Palm Dr. & 152 Ave.			1400-2400	0900-2400	0600-2200
Palm Dr. & 152 Ave.				1100-2400	0800-2200
Palm Dr. & 142 Ave.			1400-2400	1400-2400	0600-2200
Palm Dr. & 142 Ave.			1400-2400	1100-2400	0800-2200
Palm Dr. & 142 Ave.			1400-2400	1100-2400	0800-2200
Palm Dr. & 137 Ave.	Patterson	Patterson	0700-2400	0700-2400	0600-2400
Palm Dr. & 137 Ave.			1400-2400	0900-2400	0600-2200
Palm Dr. & 137 Ave.			1400-2400	1100-2400	0800-2200
Palm Dr.& Paddock			1400-2400	0900-2400	0600-2200
Palm Dr.& Paddock			1400-2400	1100-2400	0800-2200
Palm Dr. & 117 Ave.			1400-2400	1100-2400	0800-2200
Campbell Dr.& 162 Ave			1400-2400	0900-2400	0600-2200
Campbell Dr.& 162 Ave				1100-2400	0800-2200
Campbell Dr.& 157 Ave				1100-2400	0800-2200
Campbell Dr.& Turnpike			1400-2400	0900-2400	0600-2200
Campbell Dr.& Turnpike			1400-2400	0900-2400	0600-2200
Campbell Dr.& Turnpike			1400-2400	1100-2400	0800-2200
Campbell Dr.& 152 Ave			1400-2400	0900-2400	0600-2200
Campbell Dr.& 152 Ave			1400-2400	1100-2400	0800-2200
Campbell Dr.& 152 Ave			1400-2400	1100-2400	0800-2200
Campbell Dr.& 152 Ave			1400-2400	1100-2400	0800-2200
Campbell Dr.& 137 Ave			1400-2400	0900-2400	0600-2200
Campbell Dr.& 137 Ave			1400-2400	0900-2400	0600-2200
Campbell Dr.& 137 Ave			1400-2400	0900-2400	0600-2200
Lucy St. & US-1				1100-2400	0800-2200
Lucy St. & 172 Ave				1100-2400	0800-2200
Lucy St. & 167 Ave				1100-2400	0800-2200
Lucy St. & 162 Ave			1400-2400	0900-2400	0600-2200
Lucy St. & 162 Ave				1100-2400	0800-2200
Lucy St. & 162 Ave				1100-2400	0800-2200
Lucy St. & 152 Ave			1400-2400	0900-2400	0600-2200
Lucy St. & 152 Ave			1400-2400	0900-2400	0600-2200
Lucy St. & 152 Ave			1400-2400	0900-2400	0600-2200
Lucy St. & 152 Ave				1100-2400	0800-2200
Lucy St. & Park Of Commerce			1400-2400	0900-2400	0600-2200
Lucy St. & Park Of Commerce			1400-2400	1100-2400	0800-2200
Lucy St. & Park Of Commerce			1400-2400	1100-2400	0800-2200
Lucy St. & 142 Ave			1400-2400	0900-2400	0600-2200
Lucy St. & 142 Ave			1400-2400	0900-2400	0600-2200
Lucy St. & 142 Ave			1400-2400	1100-2400	0800-2200
Lucy St. & 142 Ave			1400-2400	1100-2400	0800-2200
Lucy St. & 142 Ave			1400-2400	1100-2400	0800-2200
Lucy St. & 137Ave			1400-2400	0900-2400	0600-2200
Lucy St. & 137Ave			1400-2400	0900-2400	0600-2200
Lucy St. & 137Ave			1400-2400	1100-2400	0800-2200
Lucy St. & 137Ave			1400-2400	1100-2400	0800-2200
Lucy St. & 137Ave			1400-2400	1100-2400	0800-2200
Lucy St. & 117 Ave			1400-2400	1100-2400	0800-2200

NASCAR FCW 2009

Traffic Detail

Location	Wednesday	Thursday	Friday	Saturday	Sunday
Date	11/18/2009	11/19/2009	11/20/2009	11/21/2009	11/22/2009
Hours	0700-1900	0700-1900			
Supervisor			1400-2400	1100-2400	0800-2200
152 Ave & Muxo Blvd			1400-2400	1100-2400	0800-2200
152 Ave & Muxo Blvd			1400-2400	1100-2400	0800-2200
142 Ave & Muxo Blvd			1400-2400	1100-2400	0800-2200
142 Ave & Muxo Blvd			1400-2400	1100-2400	0800-2200
142 Ave & Muxo Blvd			1400-2400	1100-2400	0800-2200
137 Ave & Muxo Blvd			0700-2400	0700-2400	0630-2200
137 Ave & Muxo Blvd					0800-2200
152 Ave & 320 St.					0800-2200
152 Ave & N. Gate			1400-2400	1100-2400	0800-2200
152 Ave & E. Lake			1400-2400	1100-2400	0800-2200
137 Ave & 320 St					0800-2200
142 Ave & 336 St.			1400-2400	1100-2400	0800-2200
142 Ave & 336 St.			1400-2400	1100-2400	0800-2200
142 Ave & 336 St.			1400-2400	1100-2400	0800-2200
142 Ave & 336 St.			1400-2400	1100-2400	0800-2200
137 Ave & 336 St.			0700-2400	0700-2400	0600-2200
137 Ave & 336 St.			1400-2400	1100-2400	0800-2200
137 Ave & 336 St.			1400-2400	1100-2400	0800-2200
137 Ave & 336 St.					0800-2200
Turn 4 & 336 St.			1400-2400	1100-2400	0800-2200
137 Ave and Floridian Bay Entrance			1400-2400	1100-2400	0800-2200
137 Ave and Floridian Bay Entrance			1400-2400	1100-2400	0800-2200
137 Ave & 288 St.			1400-2400	1100-2400	0800-2200
137 Ave & 288 St.			1400-2400	1100-2400	0600-2200
137 Ave & 288 St.			1400-2400	1100-2400	0600-2200
137 Ave & 288 St.					
137 Ave & Turnpike			1400-2400	0630-2400	0600-2200
137 Ave & Turnpike			1400-2400	0630-2400	0600-2200
Krome Ave & 344 St.			1400-2400	1100-2400	0800-2200
Krome Ave & 344 St.			1400-2400	1100-2400	0800-2200

NASCAR FCW 2009

Traffic Detail

Location	Friday	Saturday	Sunday
Date	11/20/2009	11/21/2009	11/22/2009
Hours	1500-2400	1100-2400	0800-2200
SW 162 Ave & 296 St.			
Turnpike & 288 St.(on ramp)	1400-2400		
Turnpike & 288 St.(off ramp)			
Turnpike			
Turnpike			
Turnpike			
Turnpike			
FHP SUPERVISOR	1400-2400		

NASCAR FCW 2009

Parking Lot Detail

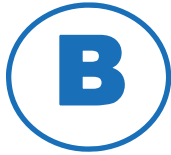
Location	FRIDAY	SATURDAY	SUNDAY
Date	11/20/2009	11/21/2009	11/22/2009
Hours	1000-2400	0700-2400	0600-2200
Supervisor	_____	_____	_____
Parking Lot Security	_____	_____	_____
Parking Lot Security	_____	_____	_____
Parking Lot Security	_____	_____	_____
Parking Lot Security	_____	_____	_____
Parking Lot Security	_____	_____	_____
Parking Lot A-1 (137 AVE) - BLUE/HNDCAP	1500-2400	0900-2400	0600-2200
Parking Lot A-2 (142 Ave.) SOUTH	1500-2400	0900-2400	0600-2200
Parking Lot A-3 (142 Ave) NORTH		0900-2400	0600-2200
Parking Lot B-1(142 AVE) NORTH	1500-2400	0900-2400	0600-2200
Parking Lot B-2(142 AVE) MIDDLE	1500-2400	0900-2400	0600-2200
Parking Lot B-3(142 AVE) SOUTH		0900-2400	0600-2200
Parking Lot B(336 ST) Hndicap		0900-2400	0600-2200
Parking Lot B(336 ST) BLUE	1500-2400	0900-2400	0600-2200
Parking Lot B(336 ST) YELLOW	1500-2400	0900-2400	0600-2200
Parking Lot C (142 Ave St.)	1500-2400	0900-2400	0600-2200
Parking Lot D (336 St.)	1500-2400	0900-2400	0600-2200
Parking Lot L (EAST / RV Ent)		0900-2400	0600-2200
Parking Lot L (Center)	1500-2400	0900-2400	0600-2200
Parking Lot L (West)	1500-2400	0900-2400	0600-2200
Parking Lot E-1 (328St)	1500-2400	0900-2400	0600-2200
Parking Lot E-1 (328St)	1500-2400	0900-2400	0600-2200
Parking Lot E-2 (336 St)	1500-2400	0900-2400	0600-2200
Handicapp Enforcement Lot A		0900-2400	0600-2200
Handicapp Enforcement Lot B	1500-2400	0900-2400	0600-2200



Inbound Directional Signage Program



= General Parking



= Blue/Handicap/Yellow



= Red/Green Parking



= Infield & Credentials



= Speedway Parking



= Worker Parking



= Yellow Parking



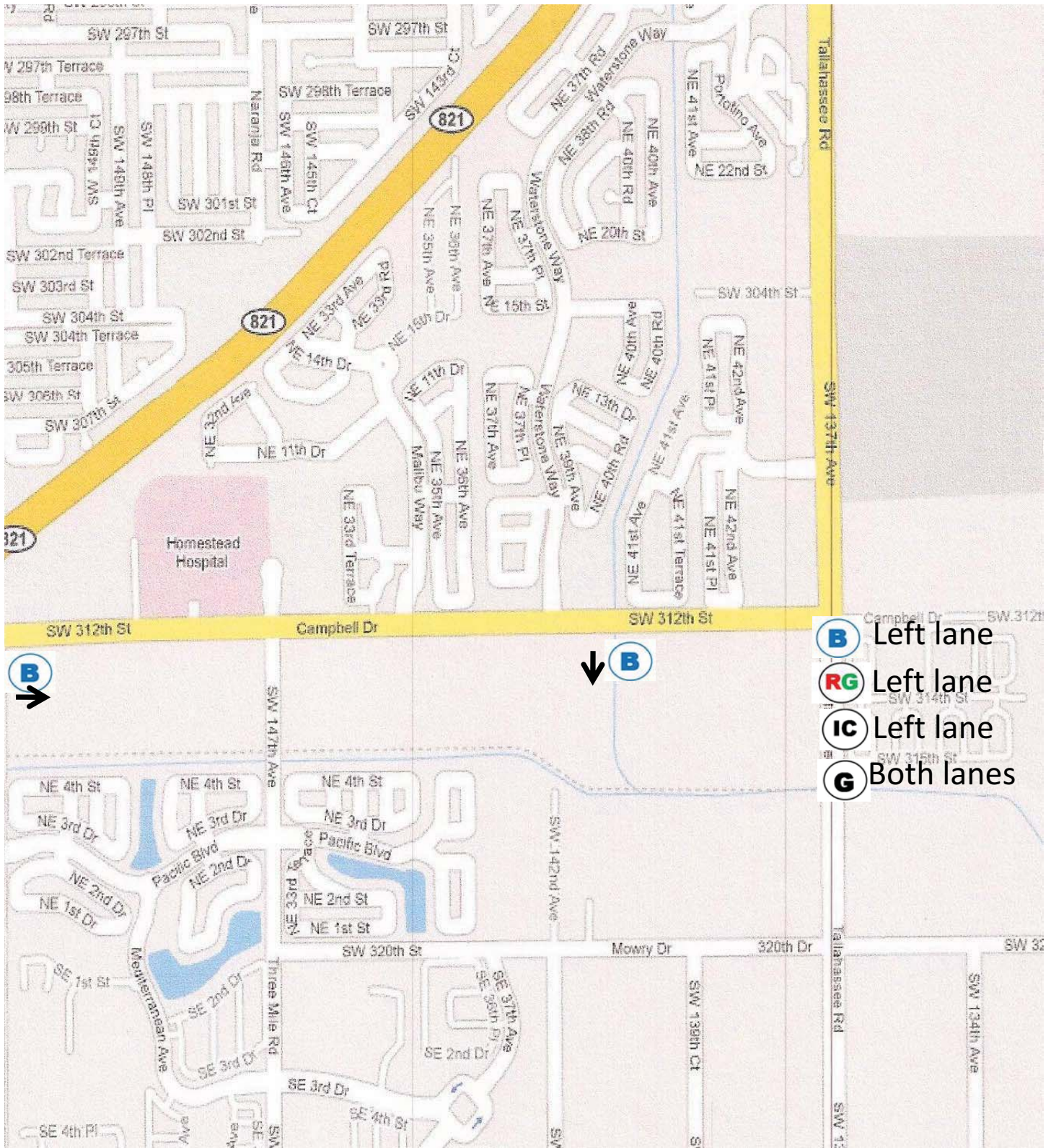
= Handicap Parking



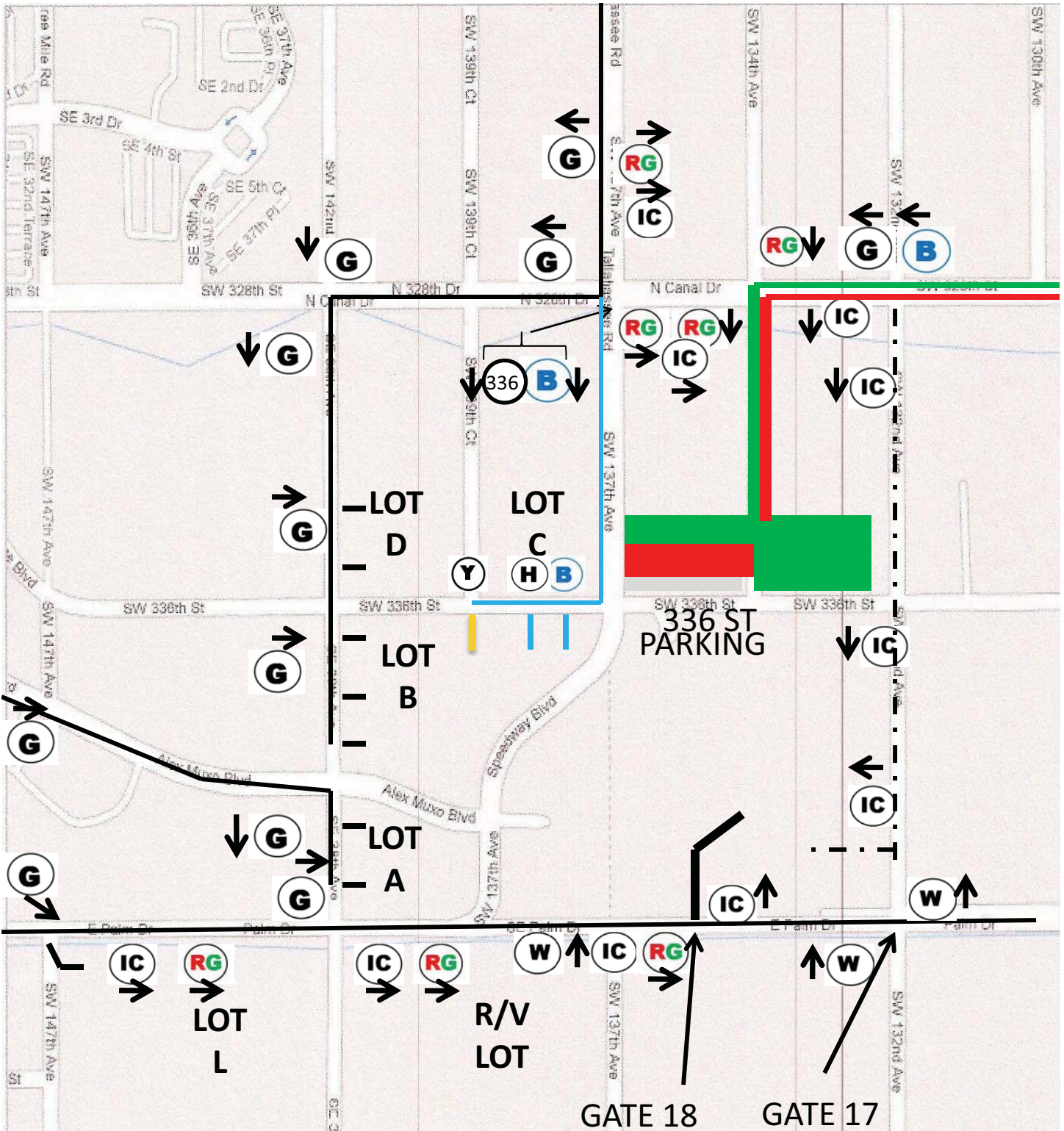
= Florida Turnpike



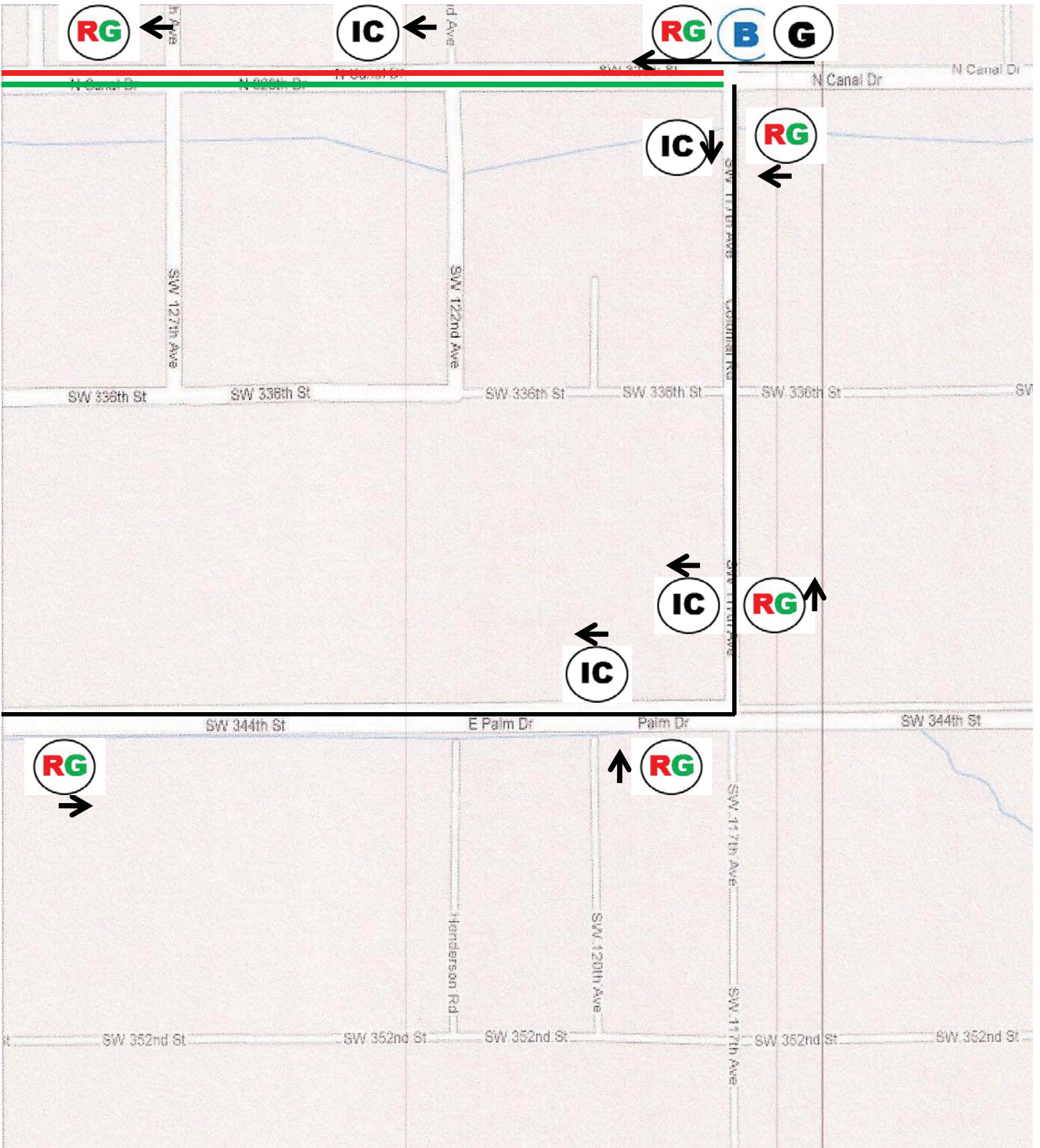
Inbound



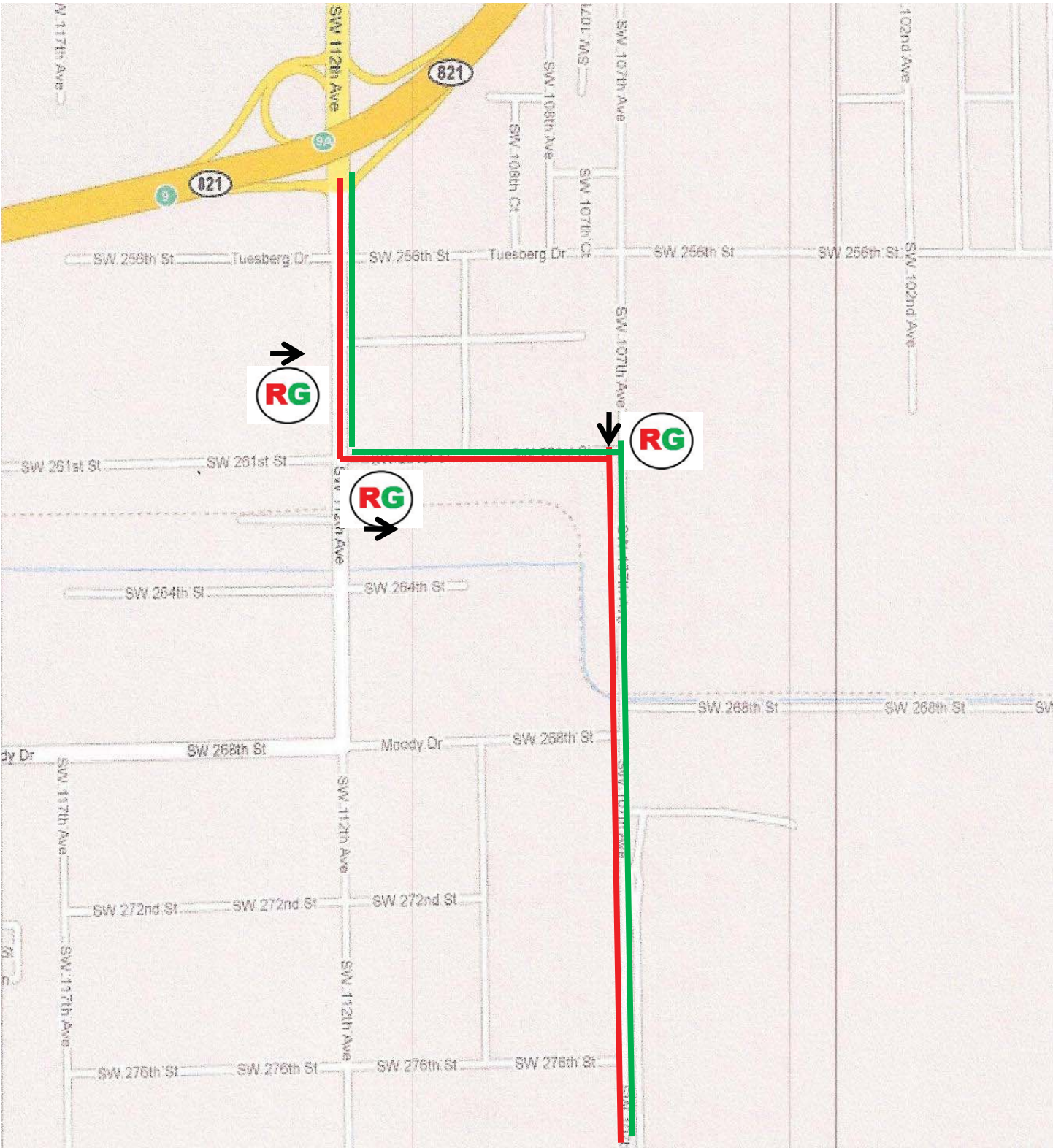
Inbound



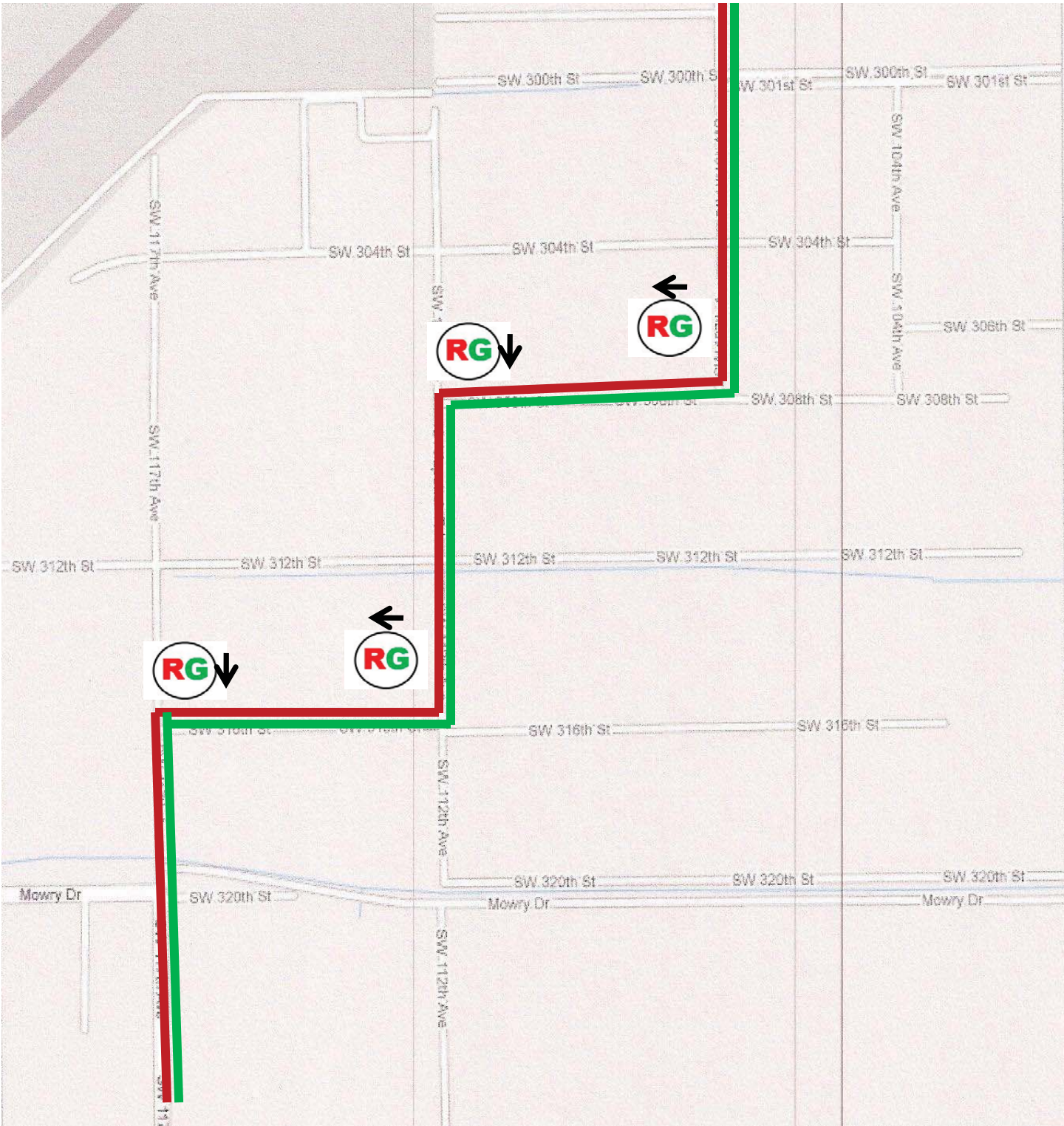
Inbound



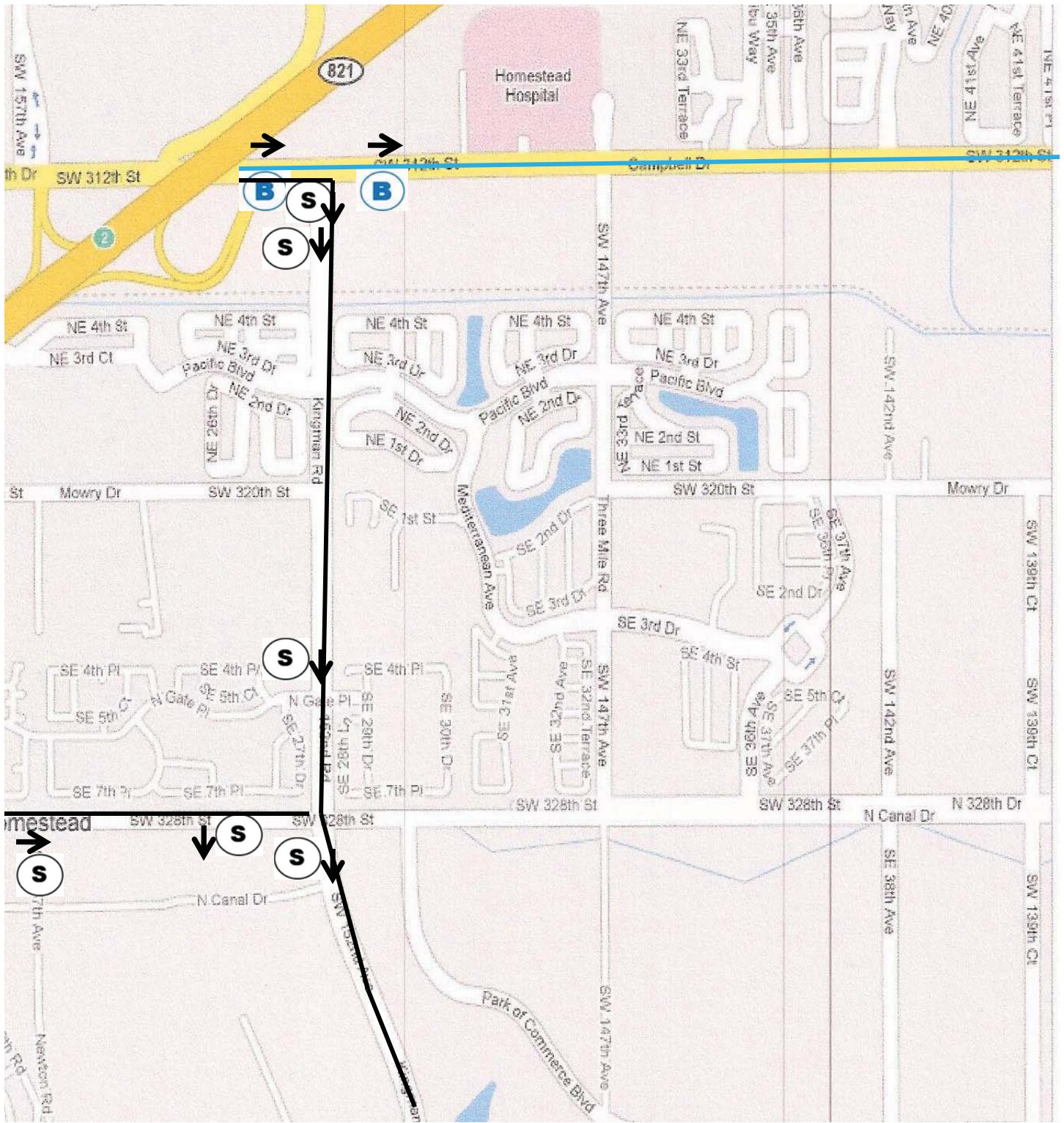
Inbound



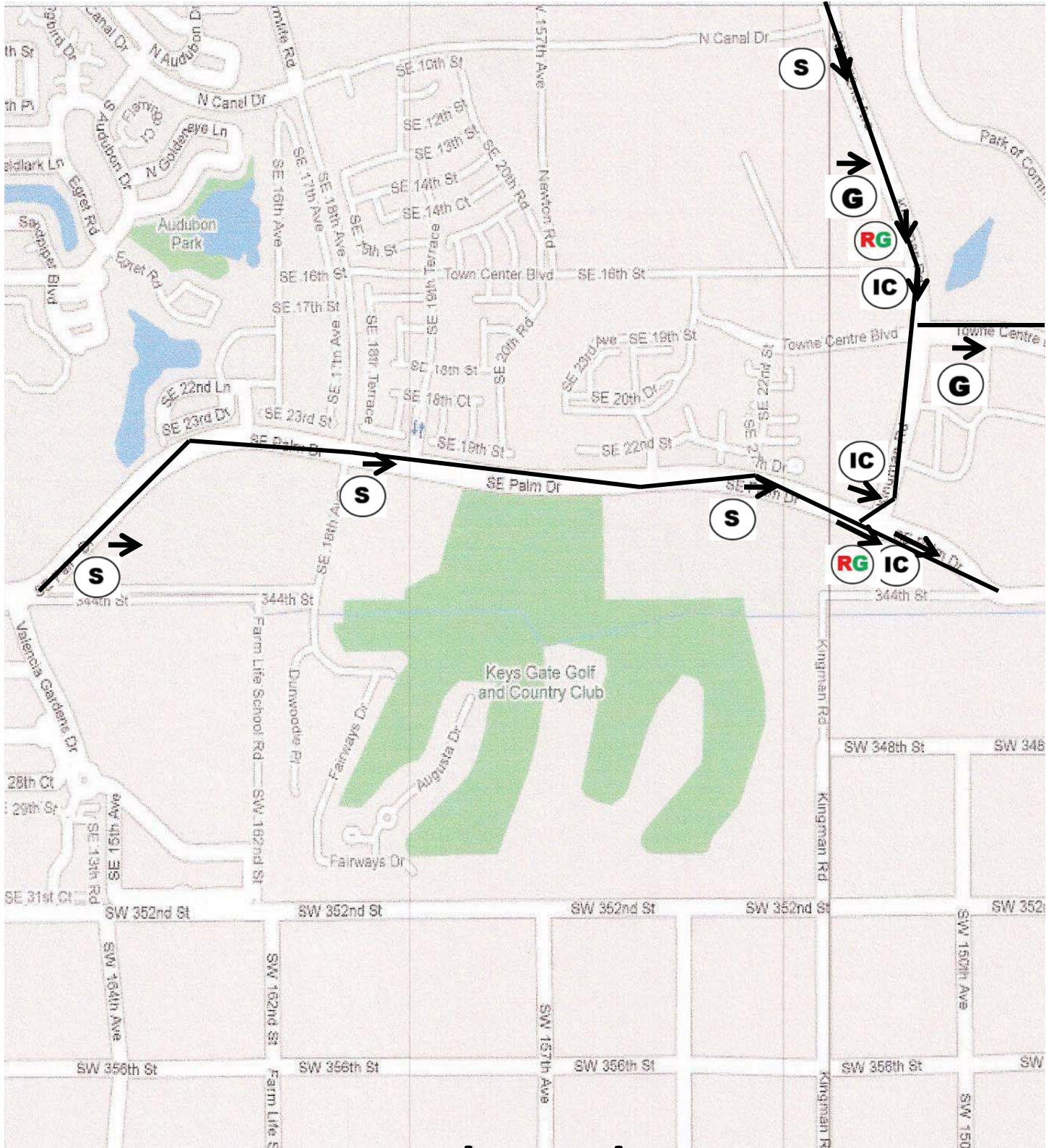
Inbound



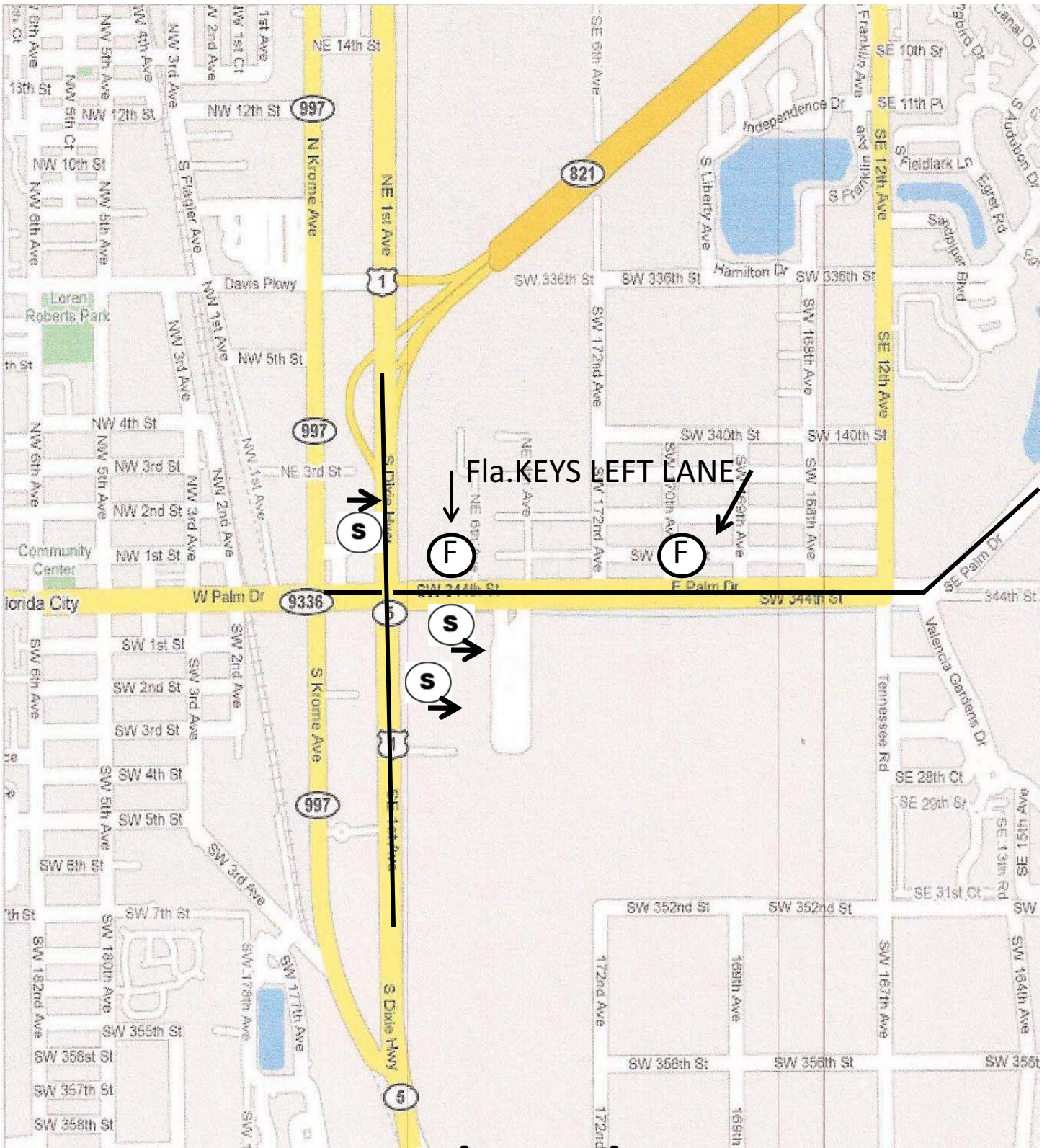
Inbound



Inbound



Inbound



Inbound



Outbound Directional Signage Program



= General Parking



= Blue/Handicap/Yellow



= Red/Green Parking



= Infield & Credentials



= Speedway Parking



= Worker Parking



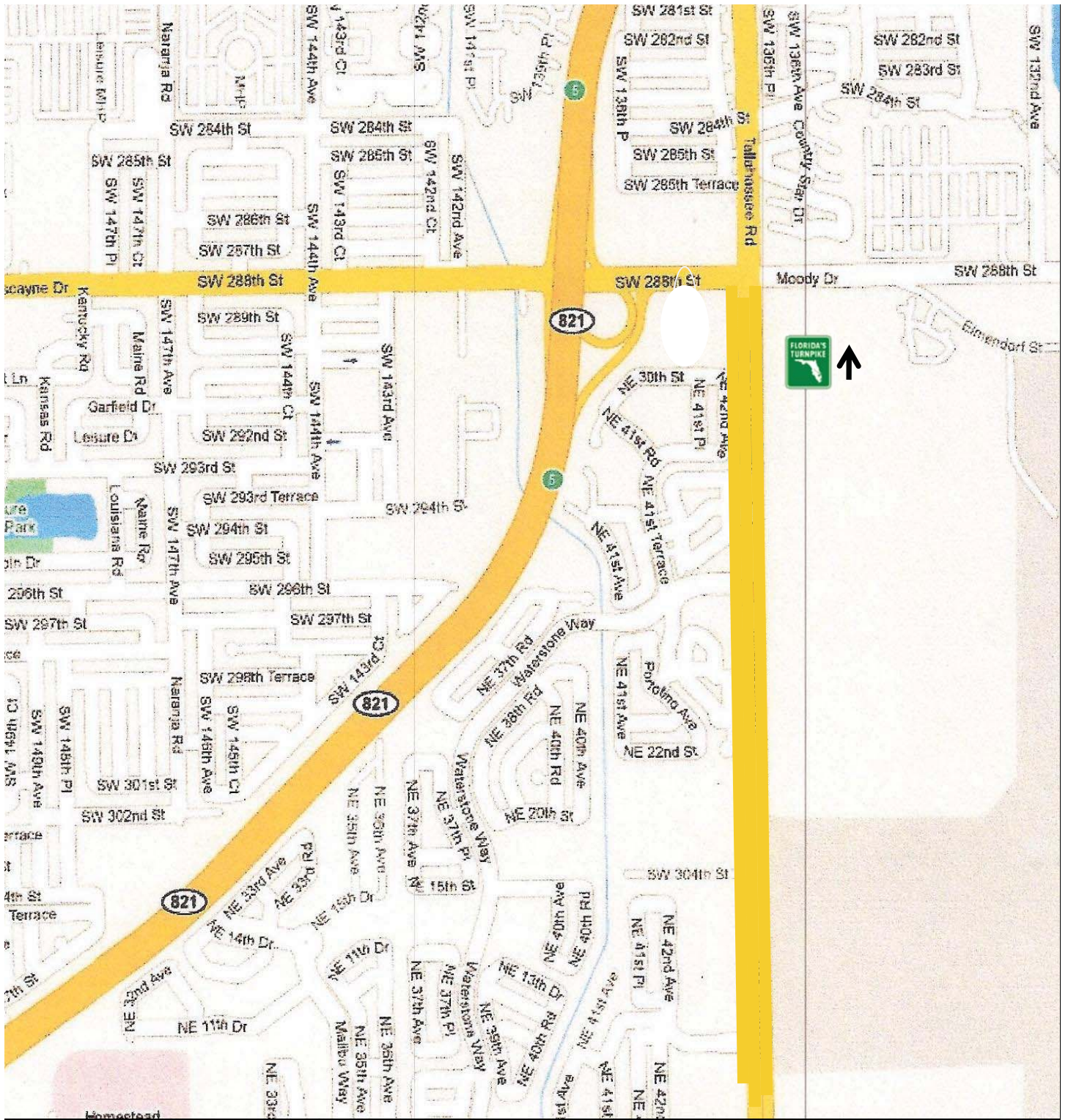
= Yellow Parking



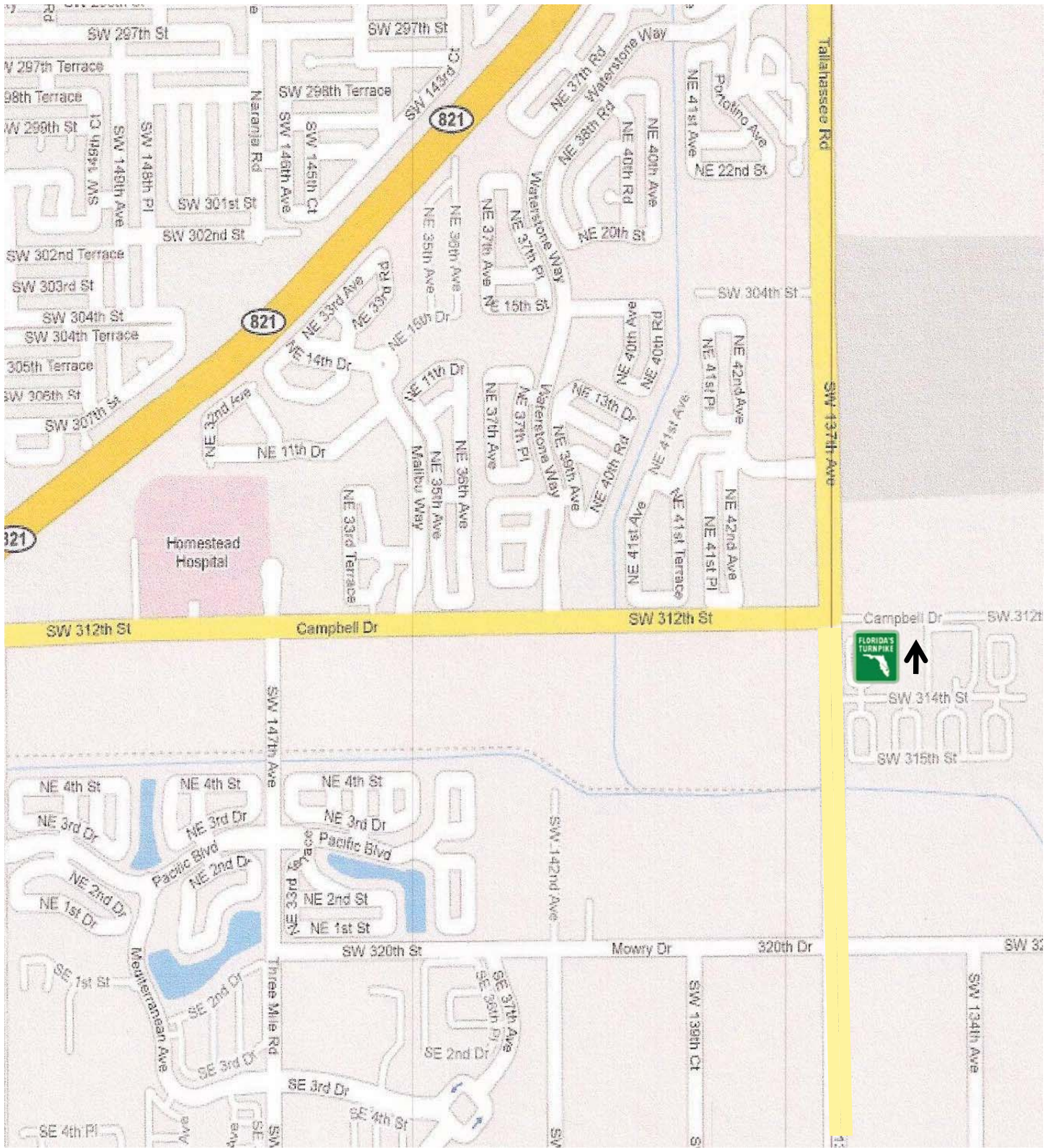
= Handicap Parking



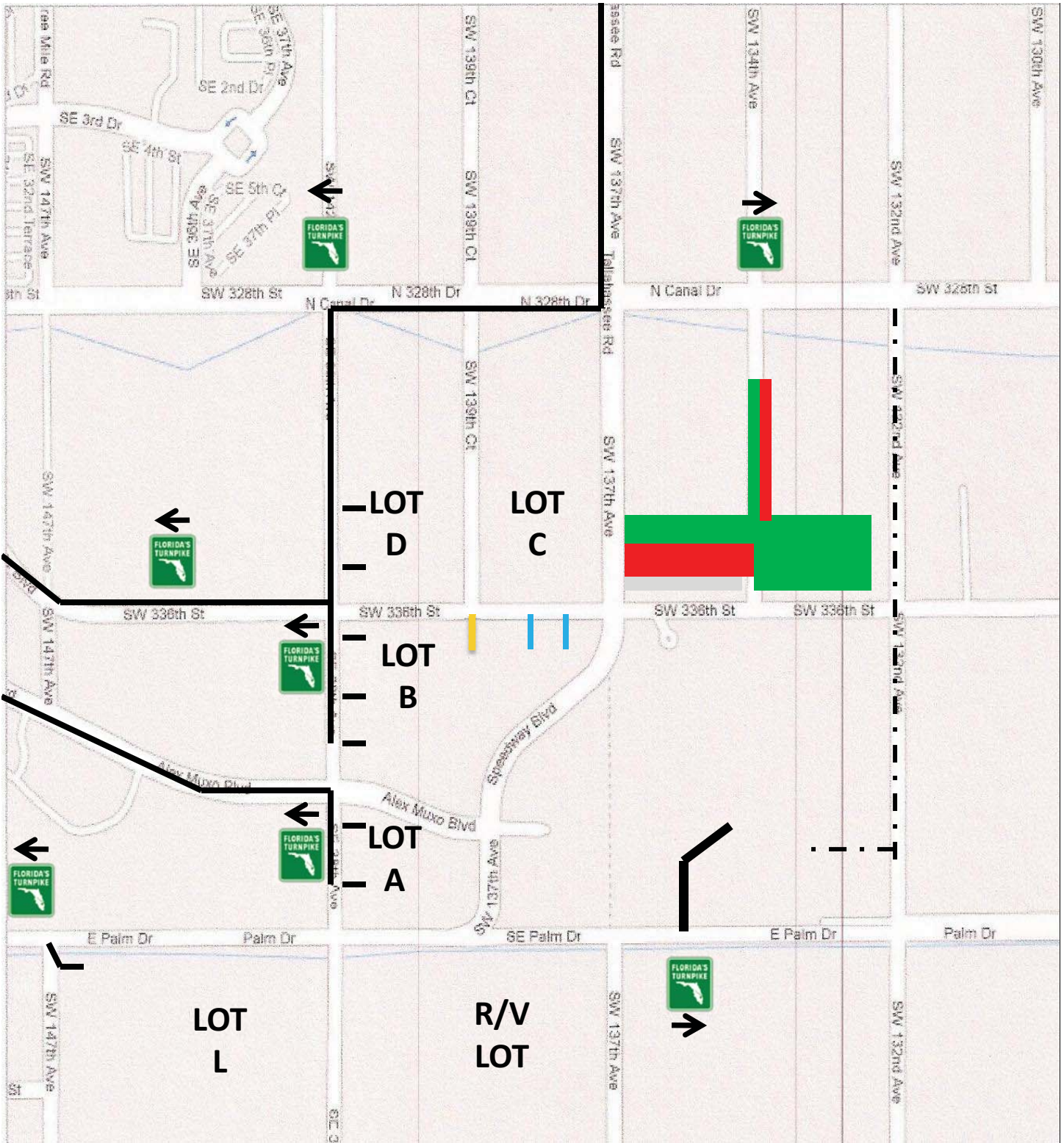
= Florida Turnpike



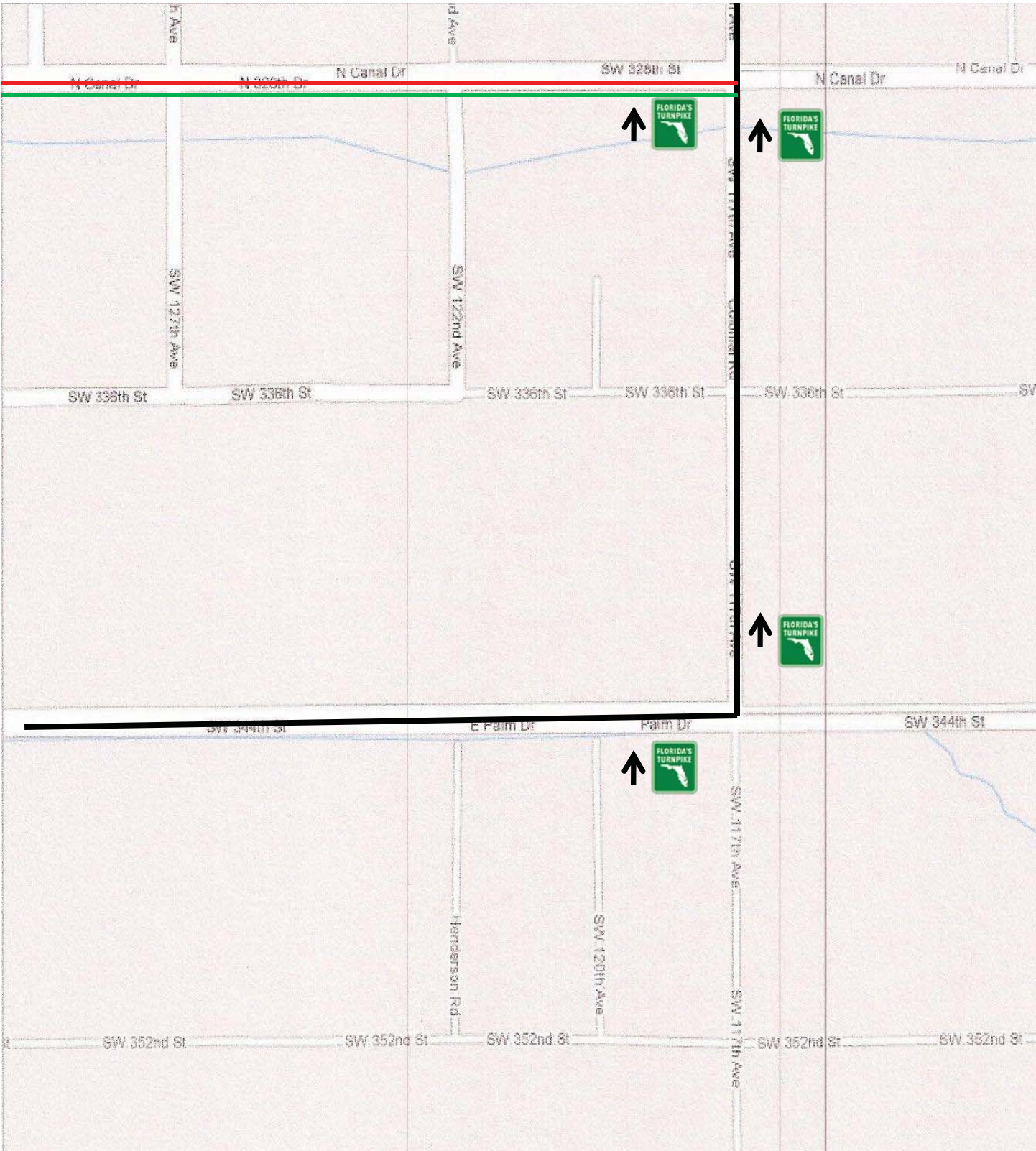
Outbound



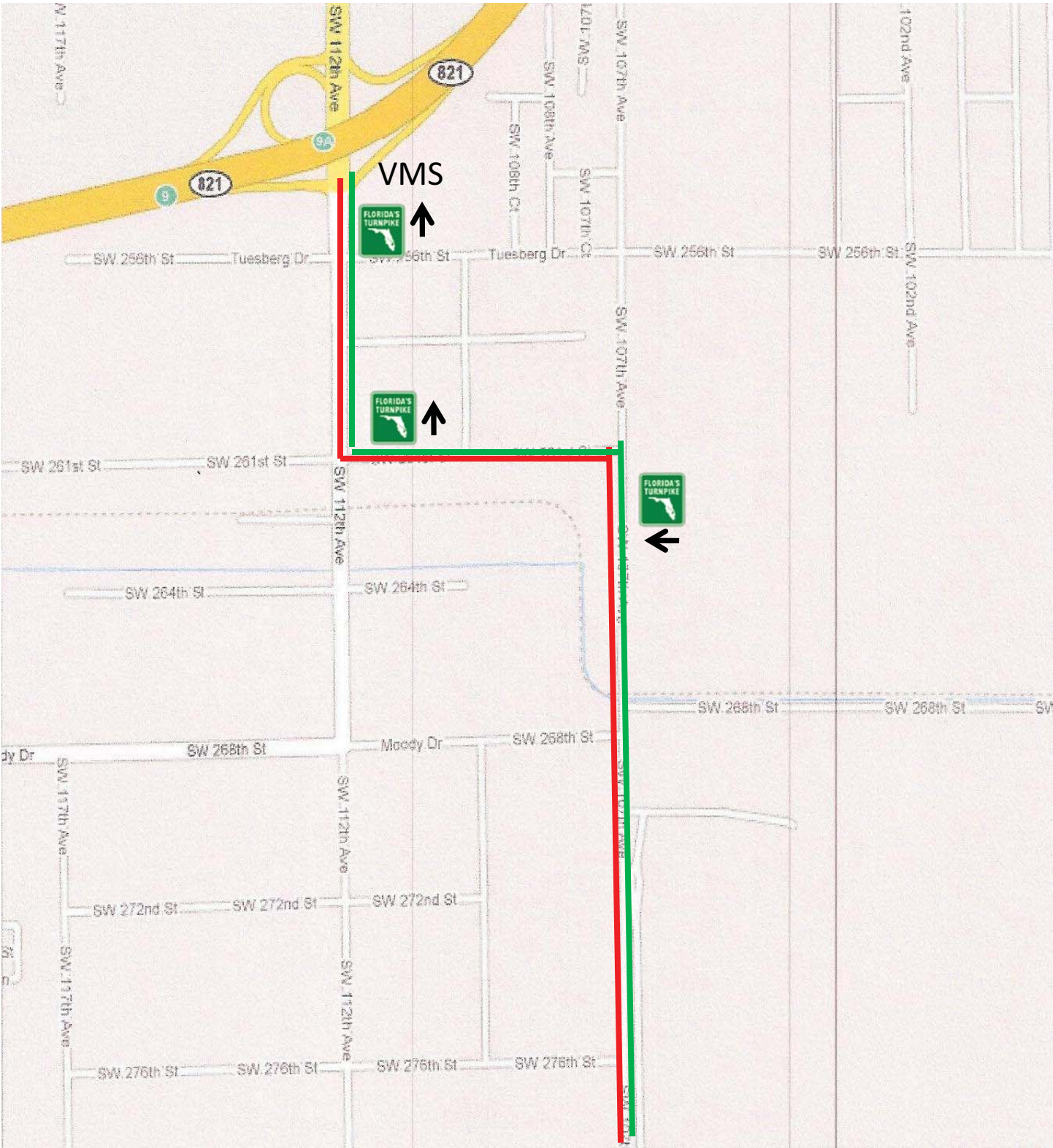
Outbound



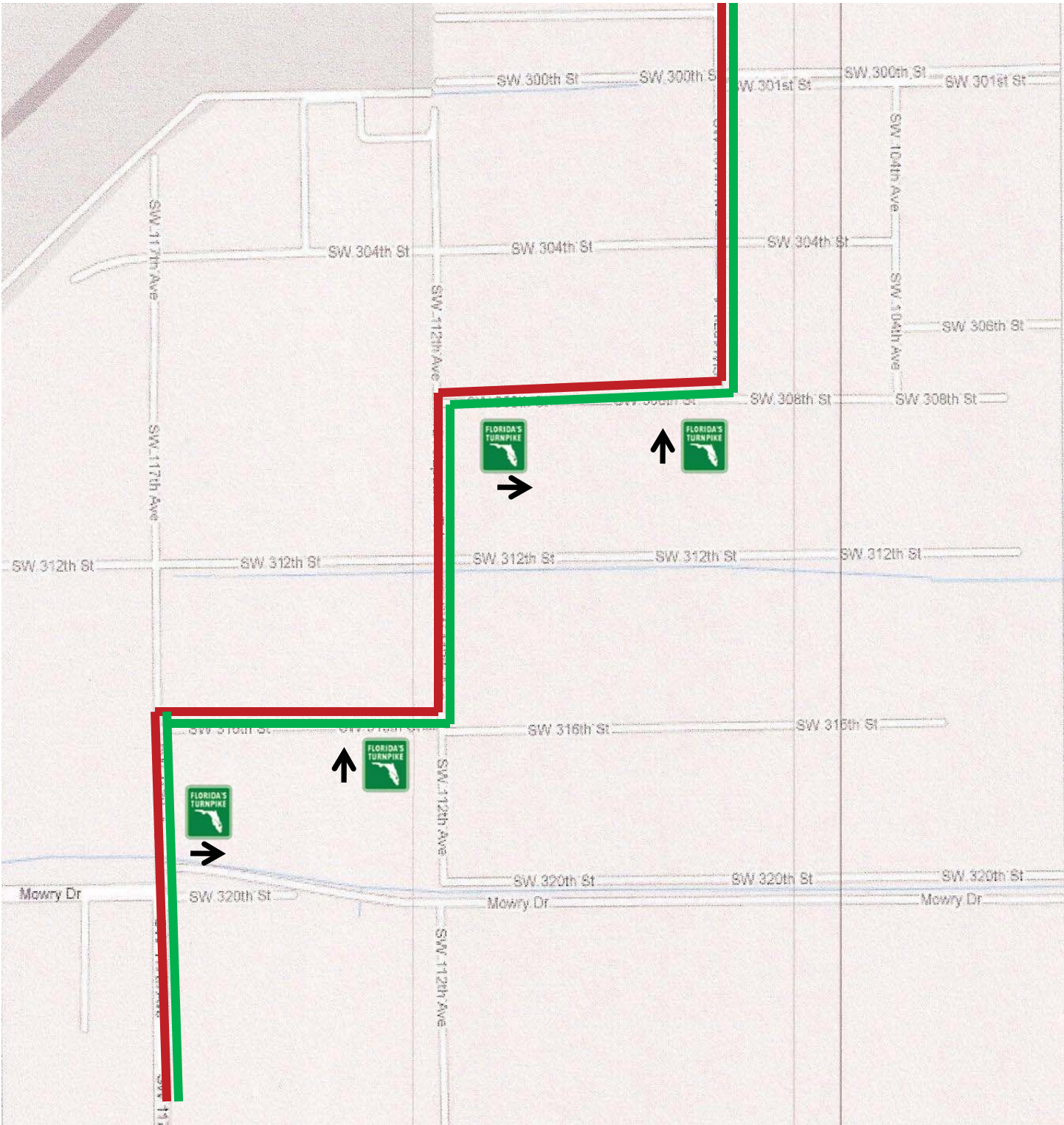
Outbound



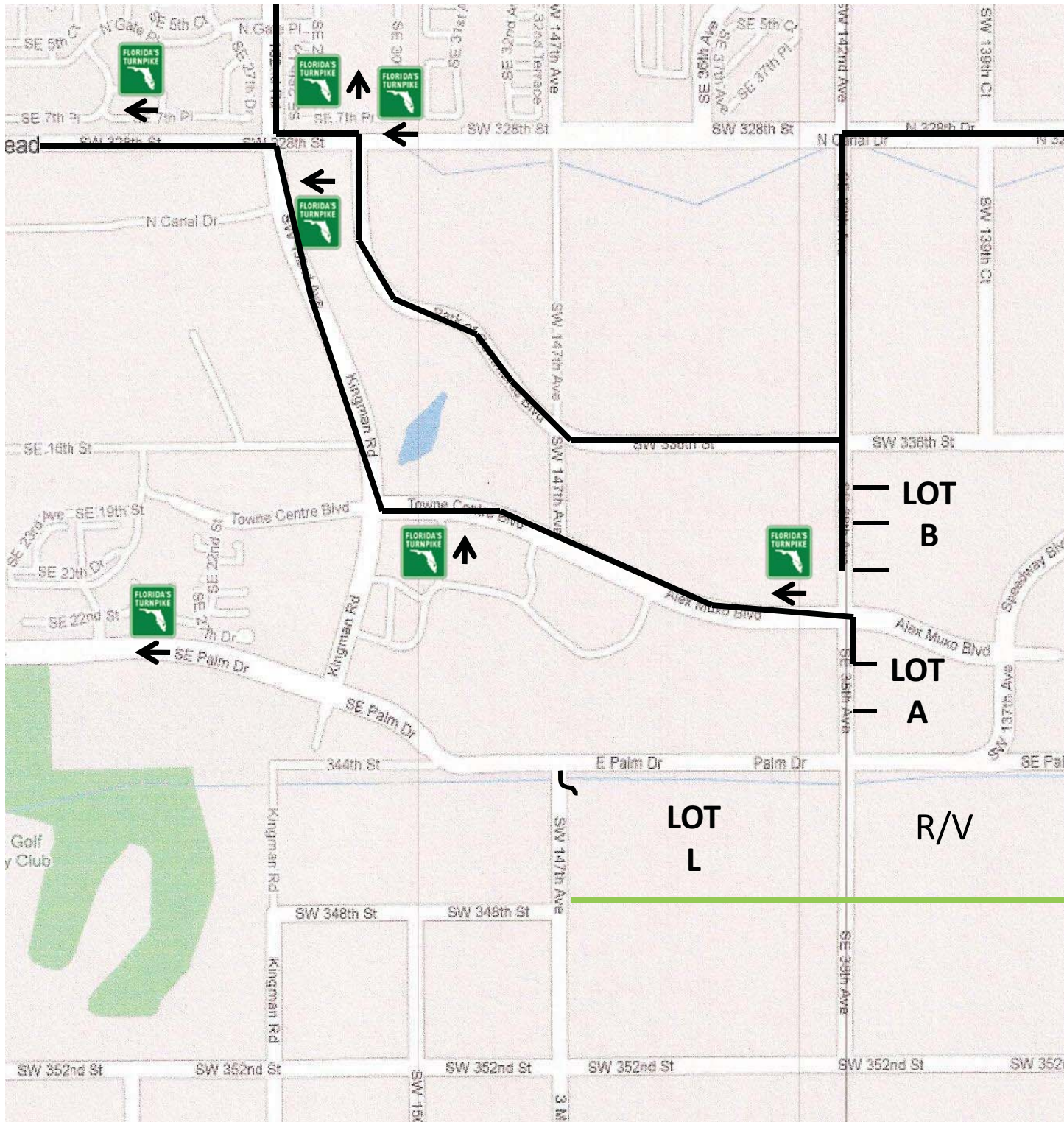
Outbound



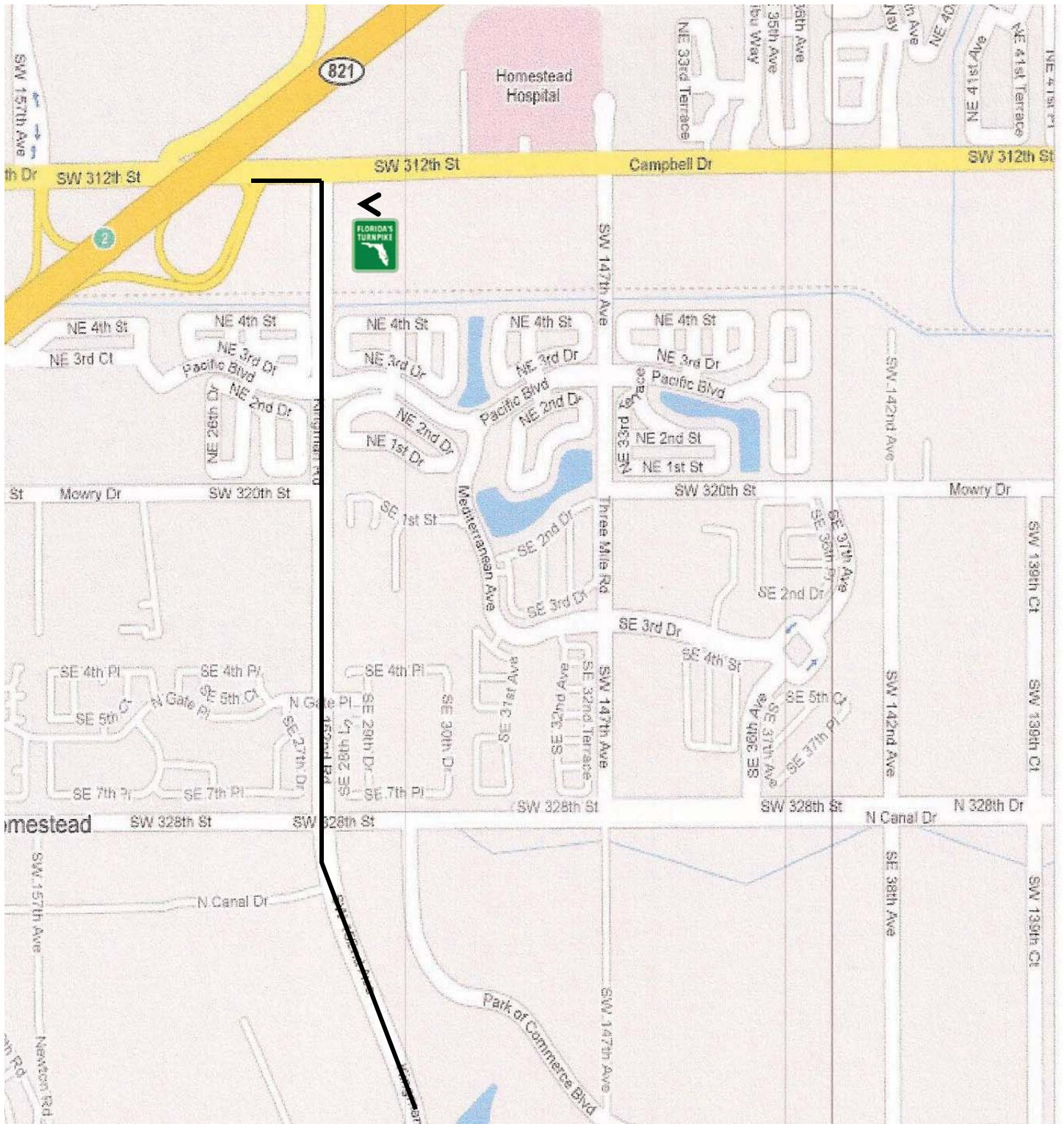
Outbound



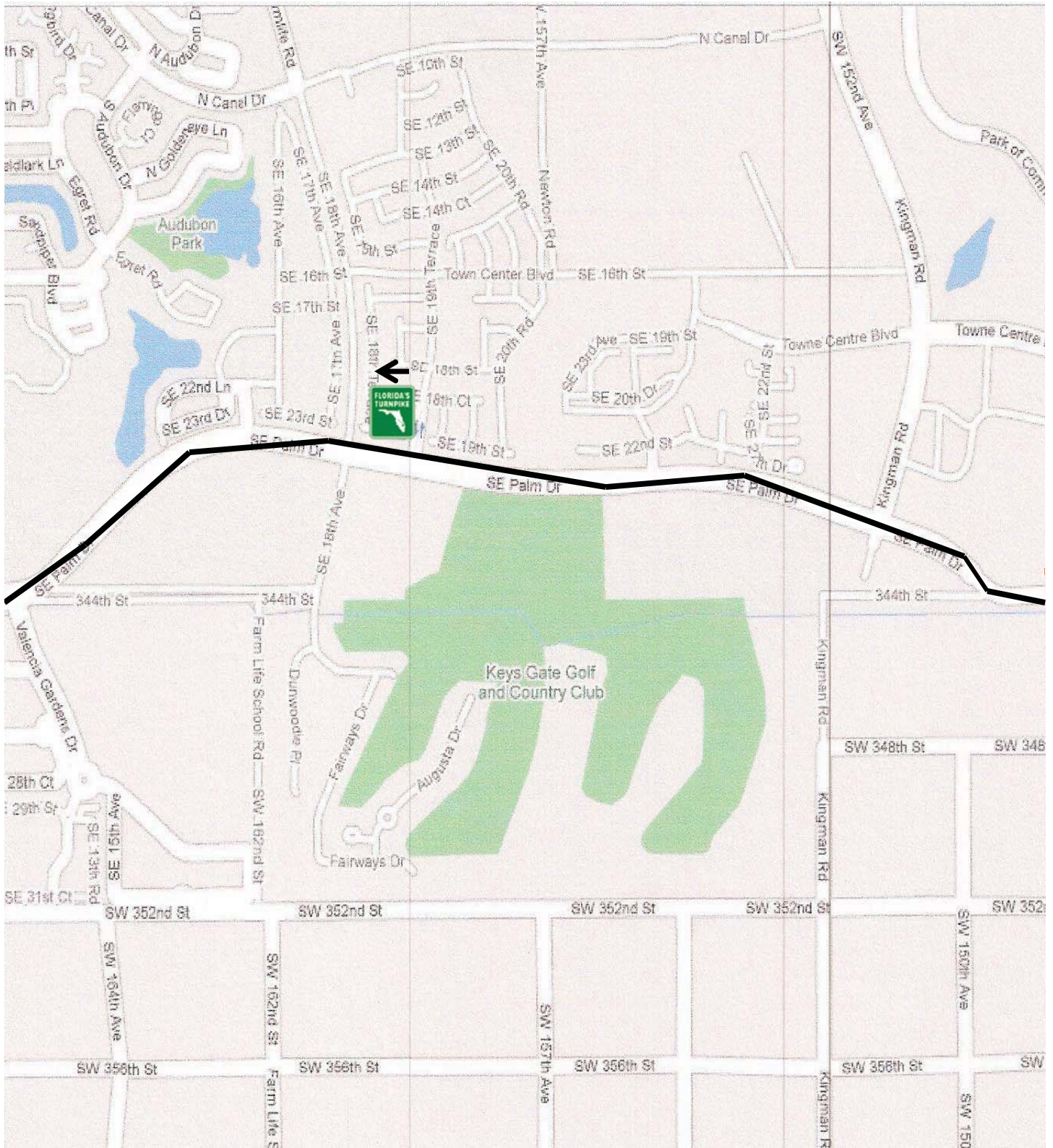
Outbound



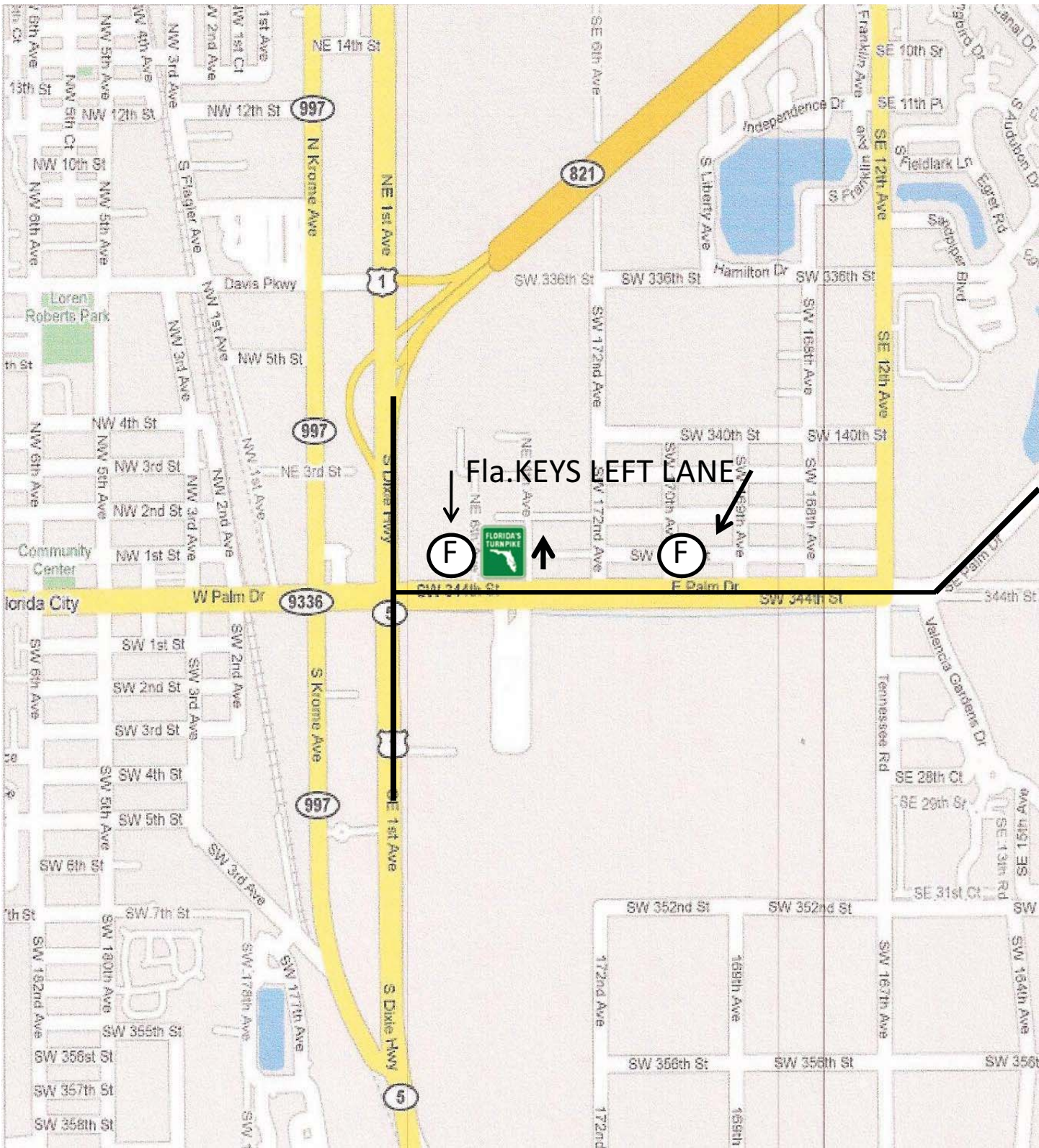
Outbound



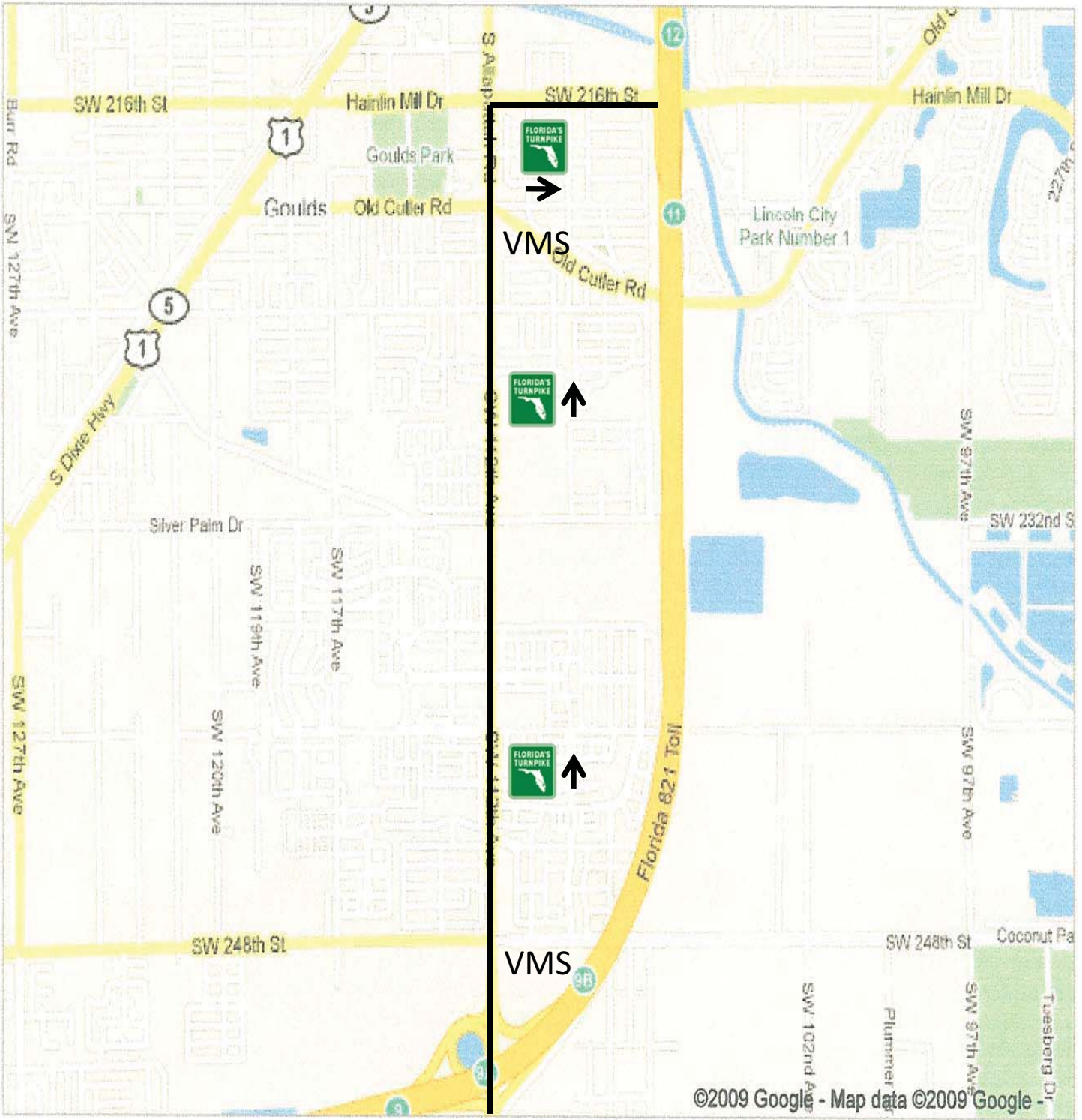
Outbound



Outbound



Outbound



Outbound