

EXHIBIT E
Biscayne Bay Regional Restoration Coordination Team: Goals & Objectives

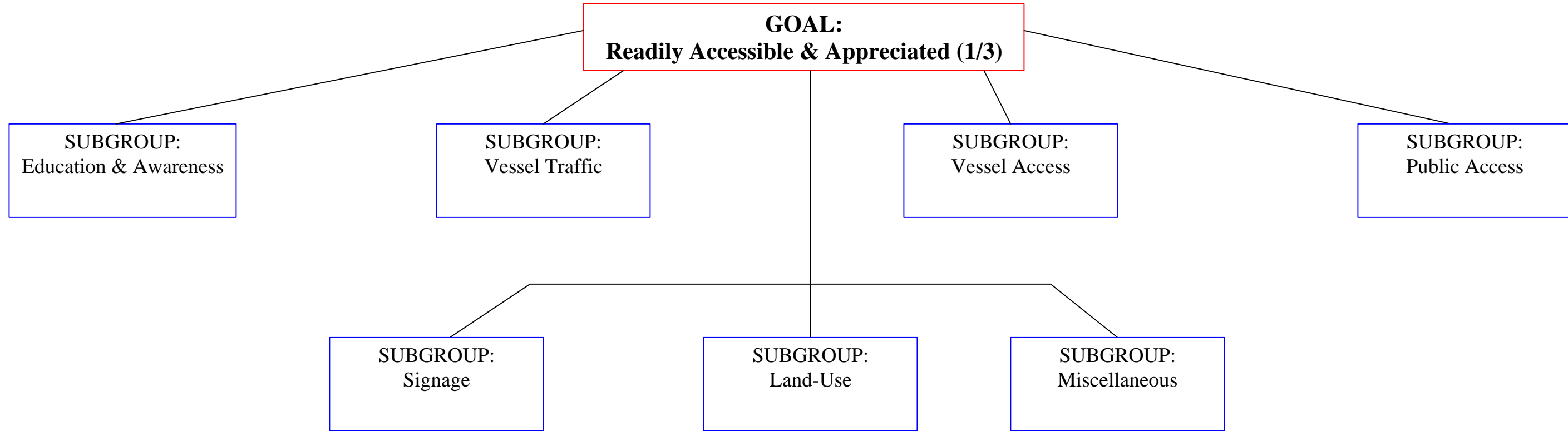


EXHIBIT E
Biscayne Bay Regional Restoration Coordination Team: Goals & Objectives

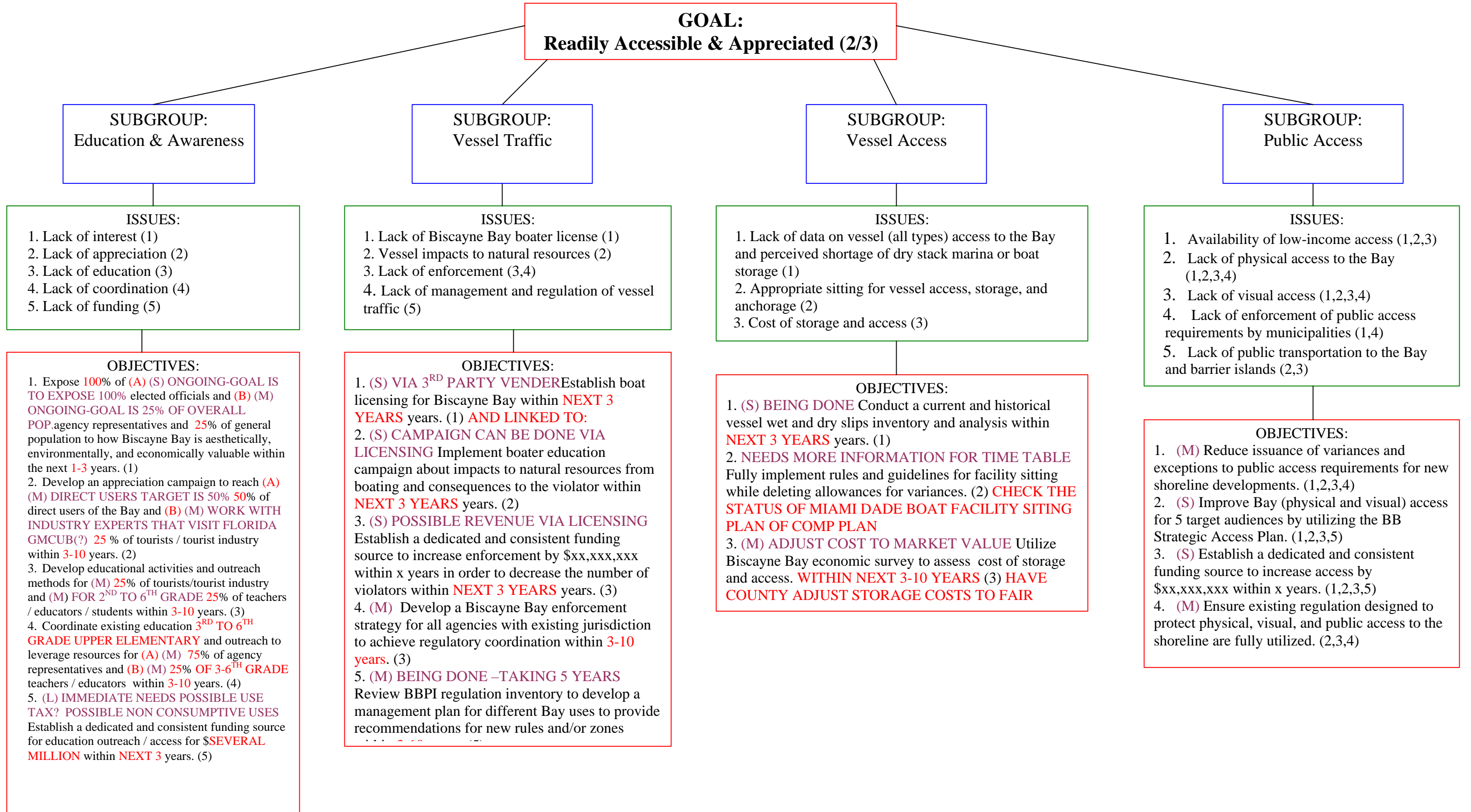


EXHIBIT E
Biscayne Bay Regional Restoration Coordination Team: Goals & Objectives

GOAL:
Readily Accessible & Appreciated (3/3)

SUBGROUP:
Signage

ISSUES:

1. Lack of educational signage (1,5)
2. Lack of interpretative signage (2,5)
3. Lack of regulatory signage (3,5)
4. Lack of directional signage (4,5)

OBJECTIVES:

1. (M) Establish a dedicated and consistent funding source to increase educational signage by \$xx,xxx,xxx within x years (1)
2. (M) Establish a dedicated and consistent funding source to increase interpretive signage by \$xx,xxx,xxx within x years (2)
3. (M) Establish a dedicated and consistent funding source to increase regulatory signage by \$xx,xxx,xxx within x years (3)
4. (M) Establish a dedicated and consistent funding source to increase directional signage by \$xx,xxx,xxx within x years (4)
5. (S) **COORDINATE WITH DIFFERENCE AGENCIES AND GROUPS TO CREATE SIGNAGE PLAN TO GET FUNDING FROM FLORIDA INLAND NAVIG. DISTRICT** Coordinate existing signage efforts to develop a signage plan within x years. (1,2,3,4)

COORDINATE WITH "FIND"

SUBGROUP:
Land-Use

ISSUES:

1. Loss of water-dependent upland uses (1,3)
2. Lack of funds to acquire environmentally critical lands adjacent to Biscayne Bay (2)
3. Process for acquiring land is too slow
4. Land use activities that impact resources (4)
5. Use of public owned land for private purpose (5)

OBJECTIVES:

1. (S) Identify and advise federal, state, and local elected officials and private property owners of private property requested for the benefit of Biscayne Bay while preserving property rights. (1)
2. (S) Establish a dedicated and consistent funding source to increase land acquisition by \$xx,xxx,xxx,xxx within x years. (2).
3. (S) Maintain water-dependent uses on waterfront land as of year xxxx. (1)
4. (M) Restrict land use and activities that impact natural resources with consideration of property rights by x% within x years. (4)
5. (M) Reducing **NON WATER DEPENDENT** leases and special uses on public lands to preserve public access by 10% within 3-10 years. (5)

ACTION STEP:

1. Timely move the passage of a bond issue for the purchase of private property.
2. Use the analysis of water quality impacts of varying land uses that will be generated by the South Miami Dade Watershed Plan to guide decisions made by the BBRRCT for future project recommendations.

SUBGROUP:
Miscellaneous

ISSUES:

1. Sea level rise
2. Over population and sustainability
3. Hurricane preparation

OBJECTIVES

1. (L) **IMPLEMENT BBPI RECOMMENDATIONS ON SEA LEVEL RISE.**
2. (L) **IMPLEMENT BBPI RECOMMENDATIONS ON OVERPOPULATION AND SUSTAINABILITY**
3. (S) **DETERMINE CARRYING CAPACITY OF BISCAYNE BAY.**

EXHIBIT E
Biscayne Bay Regional Restoration Coordination Team: Goals & Objectives

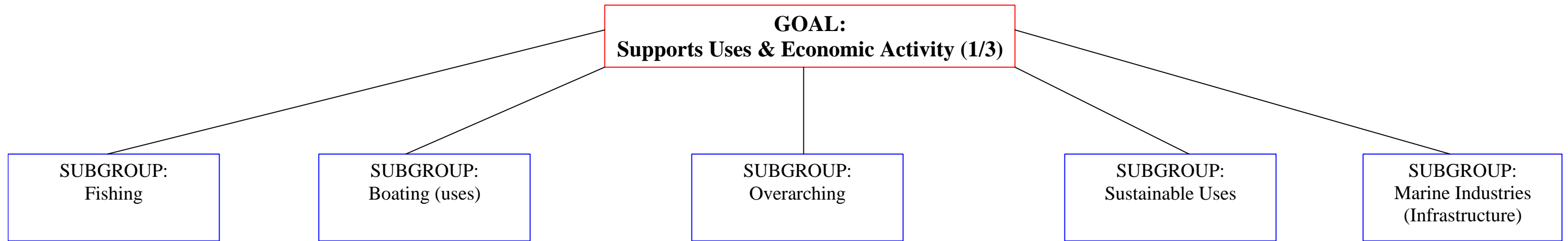
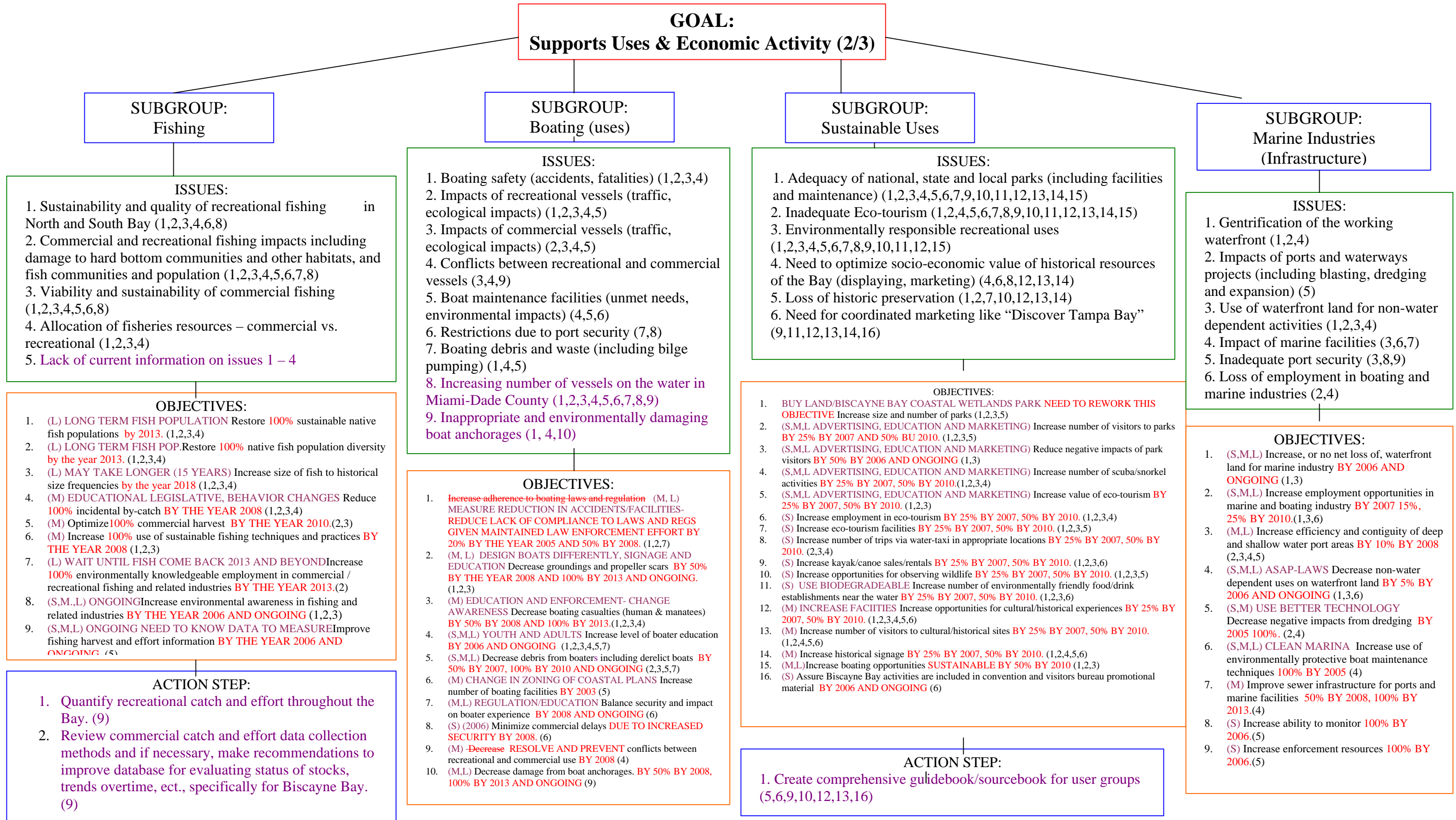


EXHIBIT E
Biscayne Bay Regional Restoration Coordination Team: Goals & Objectives



GOAL:
Supports Uses & Economic Activity (2/3)

SUBGROUP:
Fishing

ISSUES:

1. Sustainability and quality of recreational fishing in North and South Bay (1,2,3,4,6,8)
2. Commercial and recreational fishing impacts including damage to hard bottom communities and other habitats, and fish communities and population (1,2,3,4,5,6,7,8)
3. Viability and sustainability of commercial fishing (1,2,3,4,5,6,8)
4. Allocation of fisheries resources – commercial vs. recreational (1,2,3,4)
5. **Lack of current information on issues 1 – 4**

OBJECTIVES:

1. (L) LONG TERM FISH POPULATION Restore 100% sustainable native fish populations **by 2013.** (1,2,3,4)
2. (L) LONG TERM FISH POP. Restore 100% native fish population diversity **by the year 2013.** (1,2,3,4)
3. (L) MAY TAKE LONGER (15 YEARS) Increase size of fish to historical size frequencies **by the year 2018** (1,2,3,4)
4. (M) EDUCATIONAL LEGISLATIVE, BEHAVIOR CHANGES Reduce 100% incidental by-catch **BY THE YEAR 2008** (1,2,3,4)
5. (M) Optimize 100% commercial harvest **BY THE YEAR 2010.**(2,3)
6. (M) Increase 100% use of sustainable fishing techniques and practices **BY THE YEAR 2008** (1,2,3)
7. (L) WAIT UNTIL FISH COME BACK 2013 AND BEYOND Increase 100% environmentally knowledgeable employment in commercial / recreational fishing and related industries **BY THE YEAR 2013.**(2)
8. (S,M,L) ONGOING Increase environmental awareness in fishing and related industries **BY THE YEAR 2006 AND ONGOING** (1,2,3)
9. (S,M,L) ONGOING NEED TO KNOW DATA TO MEASURE Improve fishing harvest and effort information **BY THE YEAR 2006 AND ONGOING** (5)

ACTION STEP:

1. **Quantify recreational catch and effort throughout the Bay. (9)**
2. **Review commercial catch and effort data collection methods and if necessary, make recommendations to improve database for evaluating status of stocks, trends overtime, ect., specifically for Biscayne Bay. (9)**

SUBGROUP:
Boating (uses)

ISSUES:

1. Boating safety (accidents, fatalities) (1,2,3,4)
2. Impacts of recreational vessels (traffic, ecological impacts) (1,2,3,4,5)
3. Impacts of commercial vessels (traffic, ecological impacts) (2,3,4,5)
4. Conflicts between recreational and commercial vessels (3,4,9)
5. Boat maintenance facilities (unmet needs, environmental impacts) (4,5,6)
6. Restrictions due to port security (7,8)
7. Boating debris and waste (including bilge pumping) (1,4,5)
8. **Increasing number of vessels on the water in Miami-Dade County (1,2,3,4,5,6,7,8,9)**
9. **Inappropriate and environmentally damaging boat anchorages (1, 4,10)**

OBJECTIVES:

1. **Increase adherence to boating laws and regulation** (M, L) MEASURE REDUCTION IN ACCIDENTS/FACILITIES- **REDUCE LACK OF COMPLIANCE TO LAWS AND REGS GIVEN MAINTAINED LAW ENFORCEMENT EFFORT BY 20% BY THE YEAR 2005 AND 50% BY 2008.** (1,2,7)
2. (M, L) DESIGN BOATS DIFFERENTLY, SIGNAGE AND EDUCATION Decrease groundings and propeller scars **BY 50% BY THE YEAR 2008 AND 100% BY 2013 AND ONGOING.** (1,2,3)
3. (M) EDUCATION AND ENFORCEMENT- CHANGE AWARENESS Decrease boating casualties (human & manatees) **BY 50% BY 2008 AND 100% BY 2013.**(1,2,3,4)
4. (S,M,L) YOUTH AND ADULTS Increase level of boater education **BY 2006 AND ONGOING** (1,2,3,4,5,7)
5. (S,M,L) Decrease debris from boaters including derelict boats **BY 50% BY 2007, 100% BY 2010 AND ONGOING** (2,3,5,7)
6. (M) CHANGE IN ZONING OF COASTAL PLANS Increase number of boating facilities **BY 2003** (5)
7. (M,L) REGULATION/EDUCATION Balance security and impact on boater experience **BY 2008 AND ONGOING** (6)
8. (S) (2006) Minimize commercial delays **DUE TO INCREASED SECURITY BY 2008.** (6)
9. (M) **Decrease RESOLVE AND PREVENT** conflicts between recreational and commercial use **BY 2008** (4)
10. (M,L) Decrease damage from boat anchorages. **BY 50% BY 2008, 100% BY 2013 AND ONGOING** (9)

SUBGROUP:
Sustainable Uses

ISSUES:

1. Adequacy of national, state and local parks (including facilities and maintenance) (1,2,3,4,5,6,7,9,10,11,12,13,14,15)
2. Inadequate Eco-tourism (1,2,4,5,6,7,8,9,10,11,12,13,14,15)
3. Environmentally responsible recreational uses (1,2,3,4,5,6,7,8,9,10,11,12,15)
4. Need to optimize socio-economic value of historical resources of the Bay (displaying, marketing) (4,6,8,12,13,14)
5. Loss of historic preservation (1,2,7,10,12,13,14)
6. Need for coordinated marketing like “Discover Tampa Bay” (9,11,12,13,14,16)

OBJECTIVES:

1. **BUY LAND/BISCAYNE BAY COASTAL WETLANDS PARK NEED TO REWORK THIS OBJECTIVE** Increase size and number of parks (1,2,3,5)
2. (S,M,L ADVERTISING, EDUCATION AND MARKETING) Increase number of visitors to parks **BY 25% BY 2007 AND 50% BU 2010.** (1,2,3,5)
3. (S,M,L ADVERTISING, EDUCATION AND MARKETING) Reduce negative impacts of park visitors **BY 50% BY 2006 AND ONGOING** (1,3)
4. (S,M,L ADVERTISING, EDUCATION AND MARKETING) Increase number of scuba/snorkel activities **BY 25% BY 2007, 50% BY 2010.**(1,2,3,4)
5. (S,M,L ADVERTISING, EDUCATION AND MARKETING) Increase value of eco-tourism **BY 25% BY 2007, 50% BY 2010.** (1,2,3)
6. (S) Increase employment in eco-tourism **BY 25% BY 2007, 50% BY 2010.** (1,2,3,4)
7. (S) Increase eco-tourism facilities **BY 25% BY 2007, 50% BY 2010.** (1,2,3,5)
8. (S) Increase number of trips via water-taxi in appropriate locations **BY 25% BY 2007, 50% BY 2010.** (2,3,4)
9. (S) Increase kayak/canoe sales/rentals **BY 25% BY 2007, 50% BY 2010.** (1,2,3,6)
10. (S) Increase opportunities for observing wildlife **BY 25% BY 2007, 50% BY 2010.** (1,2,3,5)
11. (S) USE BIODEGRADABLE Increase number of environmentally friendly food/drink establishments near the water **BY 25% BY 2007, 50% BY 2010.** (1,2,3,6)
12. (M) INCREASE FACILITIES Increase opportunities for cultural/historical experiences **BY 25% BY 2007, 50% BY 2010.** (1,2,3,4,5,6)
13. (M) Increase number of visitors to cultural/historical sites **BY 25% BY 2007, 50% BY 2010.** (1,2,4,5,6)
14. (M) Increase historical signage **BY 25% BY 2007, 50% BY 2010.** (1,2,4,5,6)
15. (M,L) Increase boating opportunities **SUSTAINABLE BY 50% BY 2010** (1,2,3)
16. (S) Assure Biscayne Bay activities are included in convention and visitors bureau promotional material **BY 2006 AND ONGOING** (6)

ACTION STEP:

1. **Create comprehensive guidebook/sourcebook for user groups (5,6,9,10,12,13,16)**

SUBGROUP:
Marine Industries (Infrastructure)

ISSUES:

1. Gentrification of the working waterfront (1,2,4)
2. Impacts of ports and waterways projects (including blasting, dredging and expansion) (5)
3. Use of waterfront land for non-water dependent activities (1,2,3,4)
4. Impact of marine facilities (3,6,7)
5. Inadequate port security (3,8,9)
6. Loss of employment in boating and marine industries (2,4)

OBJECTIVES:

1. (S,M,L) Increase, or no net loss of, waterfront land for marine industry **BY 2006 AND ONGOING** (1,3)
2. (S,M,L) Increase employment opportunities in marine and boating industry **BY 2007 15%, 25% BY 2010.**(1,3,6)
3. (M,L) Increase efficiency and contiguity of deep and shallow water port areas **BY 10% BY 2008** (2,3,4,5)
4. (S,M,L) ASAP-LAWS Decrease non-water dependent uses on waterfront land **BY 5% BY 2006 AND ONGOING** (1,3,6)
5. (S,M) USE BETTER TECHNOLOGY Decrease negative impacts from dredging **BY 2005 100%.** (2,4)
6. (S,M,L) CLEAN MARINA Increase use of environmentally protective boat maintenance techniques **100% BY 2005** (4)
7. (M) Improve sewer infrastructure for ports and marine facilities **50% BY 2008, 100% BY 2013.**(4)
8. (S) Increase ability to monitor **100% BY 2006.**(5)
9. (S) Increase enforcement resources **100% BY 2006.**(5)

EXHIBIT E
Biscayne Bay Regional Restoration Coordination Team: Goals & Objectives

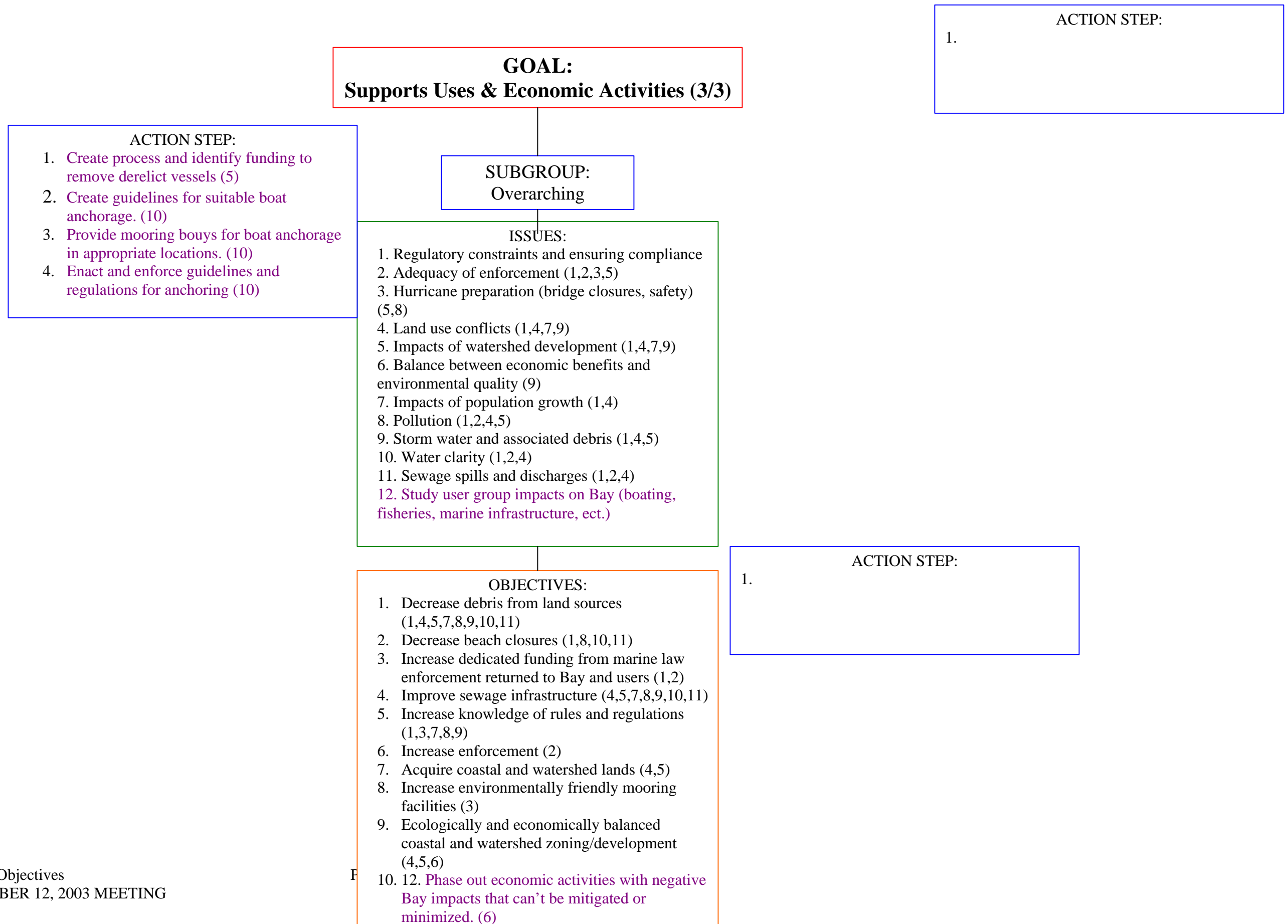


EXHIBIT E
Biscayne Bay Regional Restoration Coordination Team: Goals & Objectives

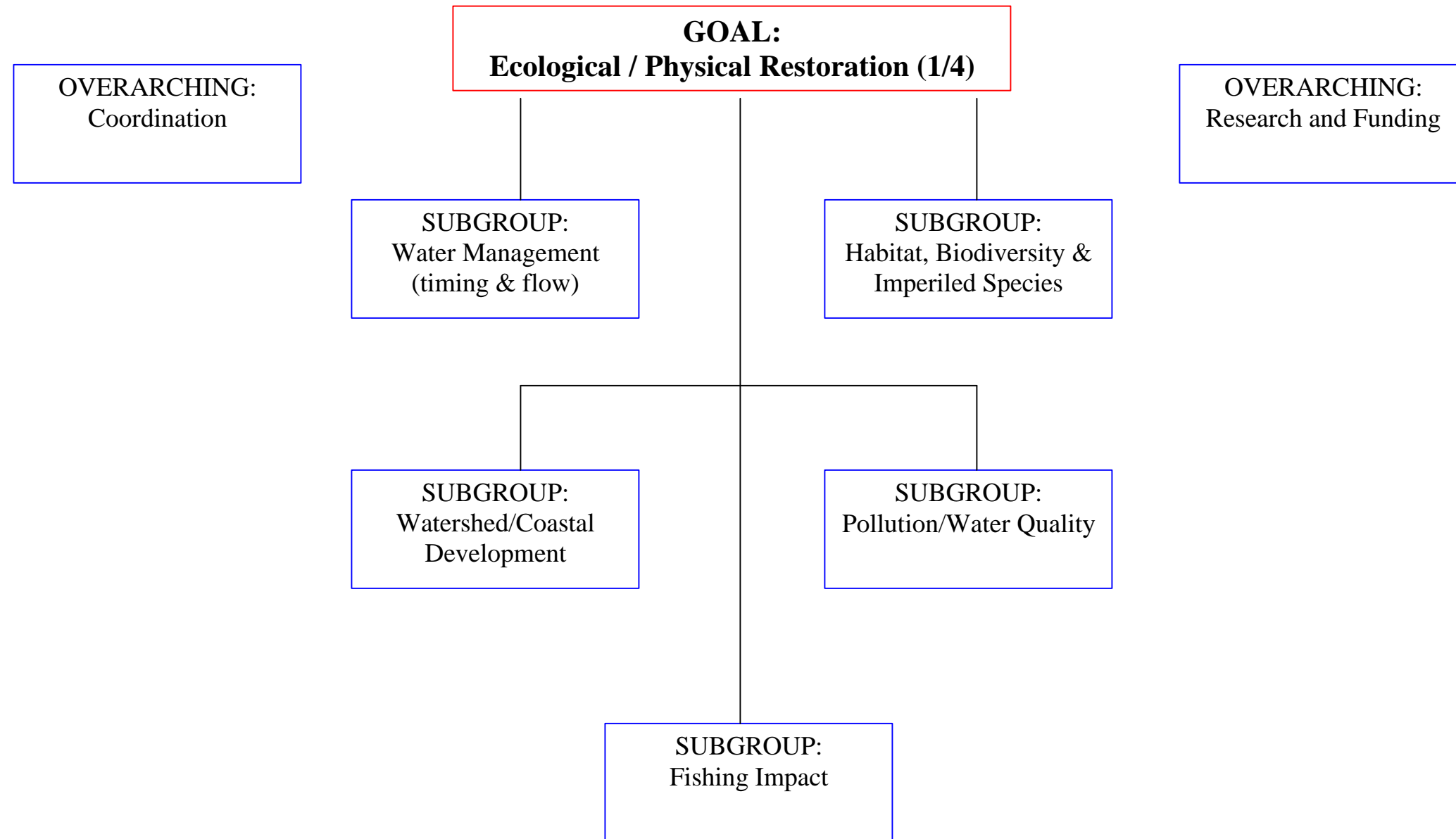


EXHIBIT E
Biscayne Bay Regional Restoration Coordination Team: Goals & Objectives

GOAL:
Ecological / Physical Restoration (2/4)

Overarching

SUBGROUP:
Coordination

SUBGROUP:
Resources & Funding

ISSUES:

- environmental restoration
- CERP
- coordination with BBCW project
- effects of CERP project on Bay
- unknown results of Everglades restoration effort
- national, state, local parks
- there needs to be more private sector involvement with restoration

ISSUES:

- resource management
- funding of water quality monitoring
- securing funding for restoration work is critical to maintain momentum
- Bay studies (economic / scientific)
-

NONE WERE ADDRESSED

OBJECTIVES:

1. reduce duplication, eliminate “gaps” and resolve conflicts among agencies and groups by securing formal approval/agreement before project implementation
2. increase the profile of Biscayne Bay in CERP

NONE WERE ADDRESSED

OBJECTIVES:

1. Secure funding support to implement Biscayne

EXHIBIT E

Biscayne Bay Regional Restoration Coordination Team: Goals & Objectives

SUBGROUP:
Pollution/Water Quality

GOAL:
Ecological / Physical Restoration (3/4)

- Land Based ISSUES:
1. Contaminated sediments in canals
 2. Presence and inputs of toxics, EPOCs, and contaminants to the Bay
 3. Quality of groundwater inputs to the Bay
 4. Nutrient loads to the Bay
 5. Effects of canal discharge on Bay health
 6. Lack of water quality standards
 7. Effects of waste water reuse (CERP, WRPP) on ecology and health of the Bay ecosystem
 8. Impacts from landfills
 9. Effects of air pollution on water quality
 10. Bacteriological contamination
 11. Run-off from land-based sources; non-point source pollution
 12. Point-source pollution
 13. Impacts from degraded infrastructure
 14. Turbidity
 15. Effects of canal and river dredging
 16. Effect of TMDLs on water quality
 17. Lack of applicable/appropriate methodologies and indicators to address tropical and subtropical water and sediment qualities

- Marine Based ISSUES:
1. Cruise ship pollution (debris/oil/fuel discharges)
 2. Pollution from users/boats (debris/oil/fuel discharges)
 3. Clean marinas
 4. Potential for damaging anchorages if approved are too costly (?)
 5. Marine debris in the Bay
 6. Trash on shoreline
 7. There is no organized effort to continuously keep the Bay clean
 8. Effects of bay and ocean dredging
 9. Port expansion / ocean blasting

- Land Based OBJECTIVES:
1. (S) LITERATURE-1 YEAR WORK, 1 YEAR REPORT Assess and evaluate the applicable/appropriate methodologies and indicators to address tropical & subtropical water and sediment qualities and adjust methodology accordingly (predecessor to Objective #3) (1,2,4,5,6,10,12,15,16,17) BY DECEMBER 31, 2006.
 2. (S) FUNDING SUPPORT BY BNP & ENP SECURED FOR NEXT YEAR (SOME) Develop and adopt water quality standards - toxics, EPOCs, heavy metals, nutrients, bacteriological and other contaminants - for the restoration of Biscayne Bay as defined by biological requirements of native flora and fauna by Dec. 31, 2006 (Issues)
 3. (L) 10 YEAR AFTER ADOPTION OF THE STANDARDS Reduce inputs of toxics, EPOCs, heavy metals, nutrients, bacteriological and other contaminants from groundwater and surface water to the Bay by 10% per year until water quality standards are met BY DECEMBER 31, 2016 (Issues 1,2,3,4,5,6,8,10,12,14,15,17)
 4. (L) Reduce contaminated sediments in canals by 80% by the year 2020 (Issues 1,2,5,12,15,17)
 5. (S) DEPENDENT ON GOVERNING BOARD (SFWMD) DECISIONS Develop and implement a comprehensive BMP program to minimize stormwater runoff, point and non-point source pollution by Dec. 31, 2005 (Issues 1,2,3,4,5,8,10,11,12,13,14,16)
 6. (L) Develop a regulatory program to implement and enforce the above-OBJECTIVES 1-5 BY DECEMBER 31, 2016. (Issues 1,2,4,5,8,10,11,12,13,14,15,16,17)
 7. (S) BASED ON WATER RESUSE PDT (PILOT STUDY) Evaluate impact of waste water reuse on wetlands of Biscayne Bay by Dec. 31, 2004. (Issues 2,4,7,10)
 8. (M) Evaluate the potential impacts of air pollution and air deposition by 2005 ON WATER QUALITY BY 2013 (Issue 9)
 9. (M) Evaluate impacts from degraded infrastructure (OLD SEWERS AND STORMWATER SYSTEMS) and address necessary upgrades by 2010 (Issues 2,4,10,12,13)
 10. (S) DEPENDENT ON SFWMD GOVERNING BOARD DECISIONS Minimize impacts from canal and river dredging to water quality via implementation of a BMP program BY DECEMBER, 2005 (Issues 1,5,14,15)

- Marine Based OBJECTIVES:
- (Note: issue #4 not addressed / understood)
1. (S) ESTABLISH A 2004 BASELINE OF TRASH, AND MARINE DEBRIS BY 12/31/04.
 2. (M) Eliminate ~~100%~~ 70% of 2004 BASELINE OF trash and marine debris from natural environment and surrounding shoreline by Dec. 31, 2010 (Issues 1,5,6,7)
 3. (S) ESTABLISH A 2004 BASELINE OF EXISTENCE AND LEVELS OF CRUISE SHIP POLLUTION FROM DISCHARGES (BILGEWATER, DEBRIS, OIL/GAS, ANTI-FOULING AGENTS, WASTEWATER) BY 12/31/2004.
 4. (M) ~~(Determine existence and level of~~ ELIMINATE ~~100%~~ 70% OF 2004 BASELINE POLLUTION BY cruise ship pollution from discharges (bilge water, debris, oil/gas, anti-fouling agents, wastewater) Dec. 31, 2010) (Issues 1,5,7,
 5. (S) ESTABLISH A 2004 BASELINE LEVEL OF POLLUTION FROM USERS/BOATS BY 12/31/2004.
 6. (M) ~~Determine the level~~ ELIMINATE BY 70% 2004 BASELINE POLLUTION FROM USERS/BOATERS BY Dec. 31, 2010. (Issues 2, 5,6)
 7. (S) ESTABLISH A BMP PROGRAM BY 12/31.2004 TO Minimize impacts from Bay and ocean dredging to water quality via implementation of a BMP program (Issue 8)
 8. (S) ESTABLISH A BMP PROGRAM BY 12/31.2004 TO Minimize impacts from Bay and ocean blasting (ie port expansion) to water quality via implementation of a BMP program (Issue 9)

Pollution (Land Based)
PROPOSED ACTION STEPS:
1. Establish a baseline water quality (Objective 2)

EXHIBIT E
Biscayne Bay Regional Restoration Coordination Team: Goals & Objectives

PURPLE FONT INDICATES NOT ADDRESSED AT THIS MEETING

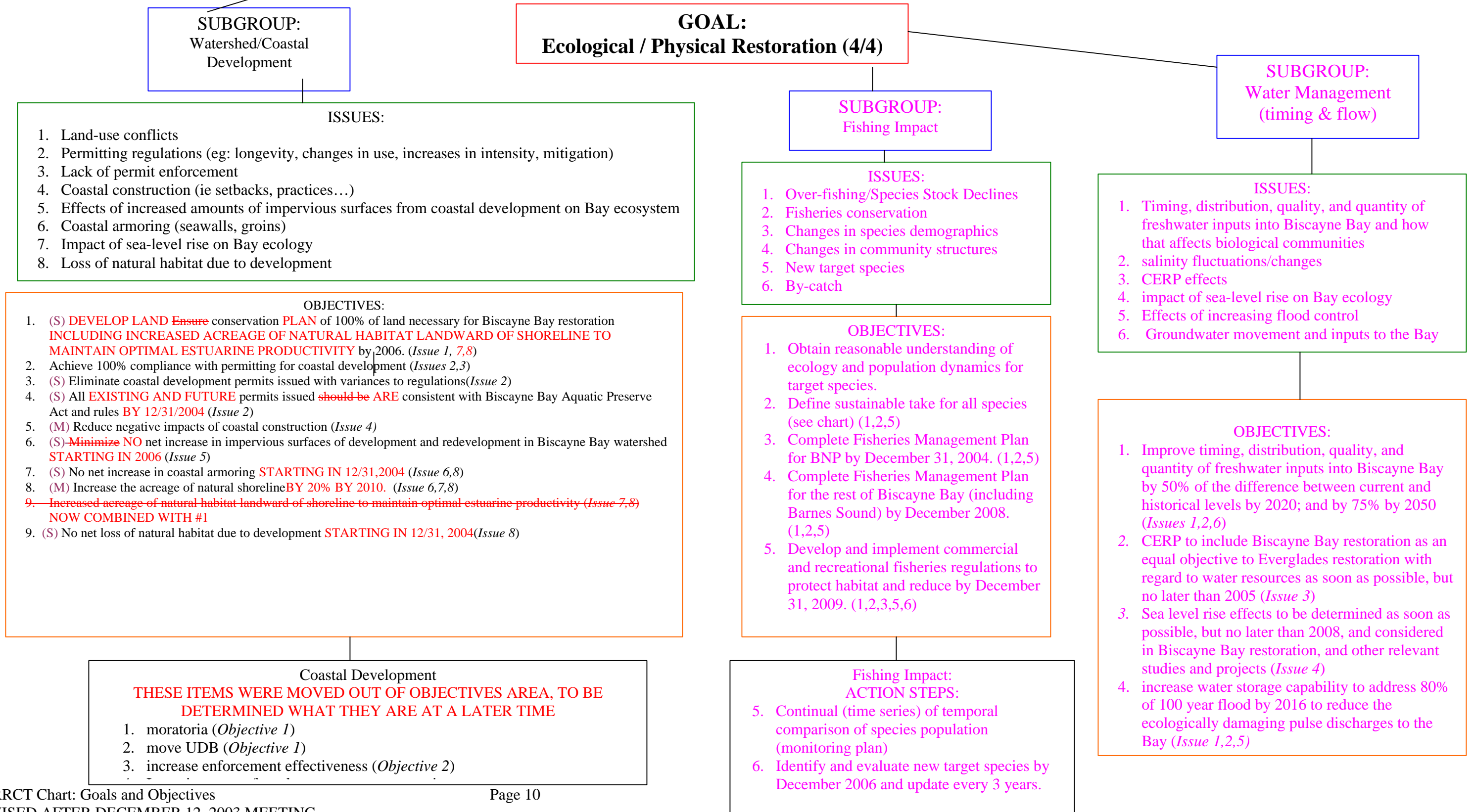


EXHIBIT E
Biscayne Bay Regional Restoration Coordination Team: Goals & Objectives

